

# SOLANO LITE



## TECHNICAL SPECIFICATIONS :

Measuring speed:	24000 pts/ s
Laser line probe:	100 mm
Accuracy:	40 $\mu$
Stand-off distance:	100 to 200 mm
Laser class:	II
Dimensions:	145 x 65 x 85
Weight:	< 400 g

Kreon



## USER BENEFITS

- Plug & Play technology
- Easy integration in operator's existing workflow
- User-friendly and portable technology
- Short learning curve
- Quick setup
- Open architecture

## APPLICATIONS

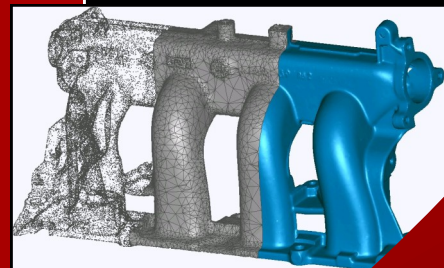
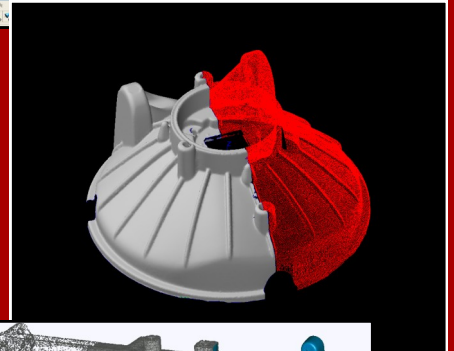
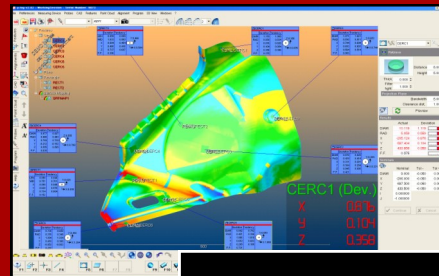
The Kreon Solano Lite scanners' characteristics are suitable for reverse engineering and quality control needs in workshop, engineering and design department or metrology room.

As Kreon precedent products, Solano Lite scanners give access to functionalities as varied as surface reconstruction, scan-to-CAD comparison, color coded visualization of deviations, etc. Operators can make critical go/no-go decisions, considerably improving product quality.

## SOFTWARE INTEGRATION

Kreon Polygonia software can be delivered as a stand-alone application for point collection and processing or as a plug-in into the world's leading application software for 3D measurement, reverse engineering or quality inspection such as :

- Metrolog XG
- Geomagic Qualify & Studio
- Polyworks
- Rapidform XO
- Power Inspect
- Spatial Analyser
- Verisurf
- Tezet CAD



### **KREON products are distributed in the following countries:**

France, Germany, Italy, UK, Switzerland, Spain, Portugal, Russia, Czech Republic, USA, Mexico, Brazil, South Africa, India, China, Japan, South Korea, Thailand, Singapore, Malaysia, Indonesia, Vietnam, Turkey, Iran.



The complete 3D scanning solutions

**Kreon Technologies**  
 Ester Technopole  
 porte 13 - 1, av. d'Esther  
 87069 Limoges Cedex  
 France  
 Tel: +33 (0)5 55 42 80 40  
 Fax: +33 (0)5 55 42 80 08  
[www.kreon3d.com](http://www.kreon3d.com)