



BAH
TA.CP
TA
MO
HT
VH
TSI/TSX
T
MT-TC-TC3
Accessori
Accessories
Appendice tecnica
Technical supplement

teste multiple a giunti universali adjustable joint multispindle heads

Le teste multiple a giunti universali sono in produzione dal 1961; nel corso degli anni hanno subito modifiche e aggiornamenti, confermando però la validità dell'idea e lasciando inalterate le caratteristiche salienti:

- possibilità di utilizzo sia in foratura che in maschiatura
- possibilità di posizionamento nello spazio dei gruppi mandrino, vincolato soltanto dalle dimensioni dello stesso e dall'area di lavoro
- adattabilità a tutti i tipi di trapani o a soluzioni speciali
- vantaggiose soprattutto quando è necessario modificare di frequente gli interassi dei fori
- ampia gamma di modelli per le diverse esigenze

Sono disponibili a magazzino le seguenti versioni:

- serie T-TS a base circolare per l'esecuzione di massimo 12 fori; massima capacità di foratura diam. mm 22, interasse minimo mm 15 e massimo mm 350
- serie TL a base lineare per l'esecuzione di massimo 12 fori; massima capacità di foratura diam. mm 22, interasse minimo mm 17 e massimo mm 610
- serie TR a base rettangolare per l'esecuzione di massimo 16 fori; massima capacità di foratura diam. mm 22, interasse minimo mm 32 e massimo mm 395x345
- serie TM-TRM a base circolare e rettangolare per l'esecuzione di massimo 26 fori; grazie alle loro caratteristiche tecniche possono eseguire i più diversi schemi di foratura e maschiatura su macchine con potenza adeguata.

Il catalogo è congegnato per avere un preciso riscontro delle caratteristiche di tutte le teste a giunti universali e delle varie soluzioni possibili con esse; le nuove schede tecniche, gli esempi di attrezzature, gli accessori e le tabelle Vi guideranno nella scelta opportuna. Qualora il Vs. lavoro non sia eseguibile con questa serie di teste, il Ns. ufficio tecnico Vi fornirà la soluzione alternativa con la serie VH ad interassi variabili o con teste ad assi fissi appositamente disegnate e costruite.

The universal joint multispindle heads have been in production since 1961; over the years they have been modified and updated, without however refuting the goodness of the idea and always leaving major features unaltered:

- possibility of using for both drilling and tapping
- possibility of multi-positioning the spindle units, restricted only by the size of the spindle and of the working area
- suitable for all types of drills or for special solutions
- especially useful when the need arises to frequently change the hole centre distances
- broad range of models for different requirements

The following versions are in stock:

- series T-TS with round base for making up to 12 holes; max drilling capacity dia. 22 mm, minimum centre distance 15 mm, max centre distance 350 mm
- series TL with linear base for making up to 12 holes; max drilling capacity dia. 22 mm, minimum centre distance 17 mm, max centre distance 610 mm
- series TR with rectangular base for making up to 16 holes; max drilling capacity dia. 22 mm, minimum centre distance 32 mm, max centre distance 395x345 mm
- series TM-TRM with round and rectangular base for making up to 26 holes; thanks to their technical features, they are able to execute a series of different drilling and tapping patterns on machines of adequate power.

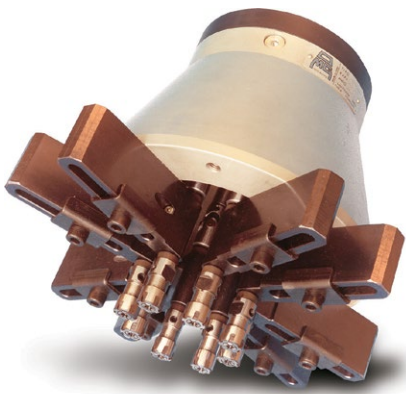
The catalogue is compiled so as to provide a precise reference for all the adjustable joint heads and the various possible solutions these offer. Thanks to the new technical sheets, equipment examples, accessories and charts, you will find making the right choice much easier.

In the event of this series of heads not providing the solution for your job, our technical department can provide alternative solutions with the variable centre distance VH series or fixed-axis heads, specially designed and made for you.

T2	8-2
T4	8-3
T7	8-4
T10	8-5
T12/TS12	8-6
T15/TS15	8-7
T18/TS18	8-8
T22/TS22	8-9
TL20/4	8-10
TL20/6	8-11
TL20/8	8-12
TL40/12	8-13
TL40/16	8-14
TL40/22	8-15
TL60/12	8-16
TL60/16	8-17
TL60/22	8-18
TR2/12	8-19
TR2/16	8-20
TR5/12	8-21
TR5/16	8-22
TR8/22	8-23
TM400	8-24
TM500	8-25
TRM43	8-26
TRM73	8-27
TRM43-2P	8-28
TRM73-2P	8-29
Mandrini per TM-TRM/TM-TRM spindles...	8-30
Attrezzature/Equipment	8-32
Manicotto di collegamento/Connection collar ..	8-34
Accessori/Accessories	10-1



T2



Codice testa
Head code

Codice mandrino
Spindle code



N° prese di moto
Nr. spindle drives

08



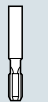
Rapporto
Ratio

1-1



Capacità di foratura
Drilling capacity

4



Maschiatura
Tapping

M4



Attacco utensile
Type of spindle

ER8



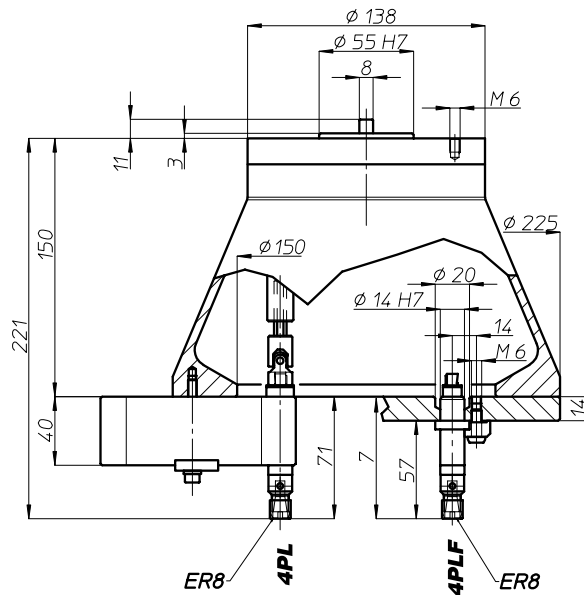
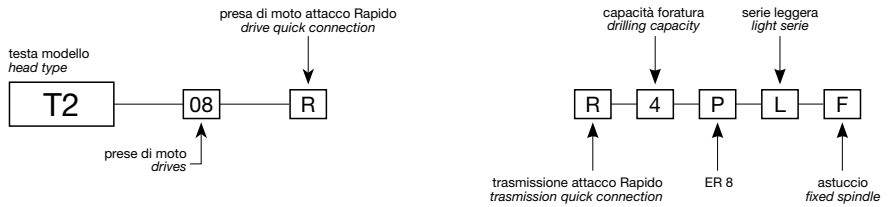
Peso gruppo testa
Head weight

Kg 3,25

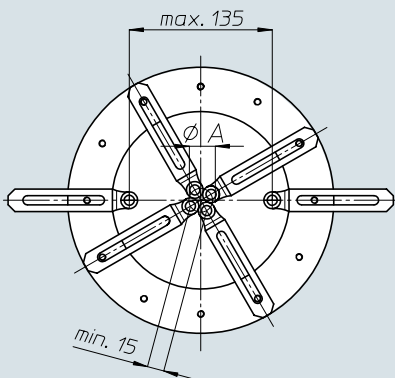


Peso gruppo mandrino
Spindle-set weight

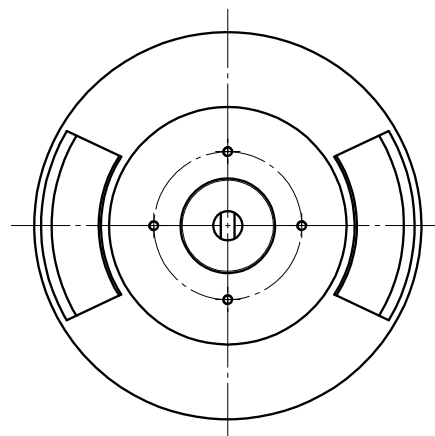
Kg 0,3



area di lavoro
working area



ø A	n° mandrini n° spindles
15	2
17,5	3
21,5	4
26	5
30	6
35	7
39,5	8



BAH

TA-CP

TA

MO

HT

VH

TSI/TSX

T

MT-TC-TC3

Accessori
Accessories

Appendice tecnica
Technical supplement

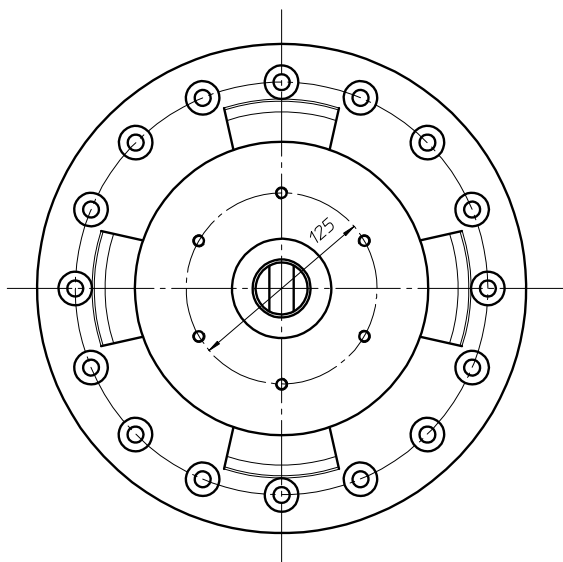
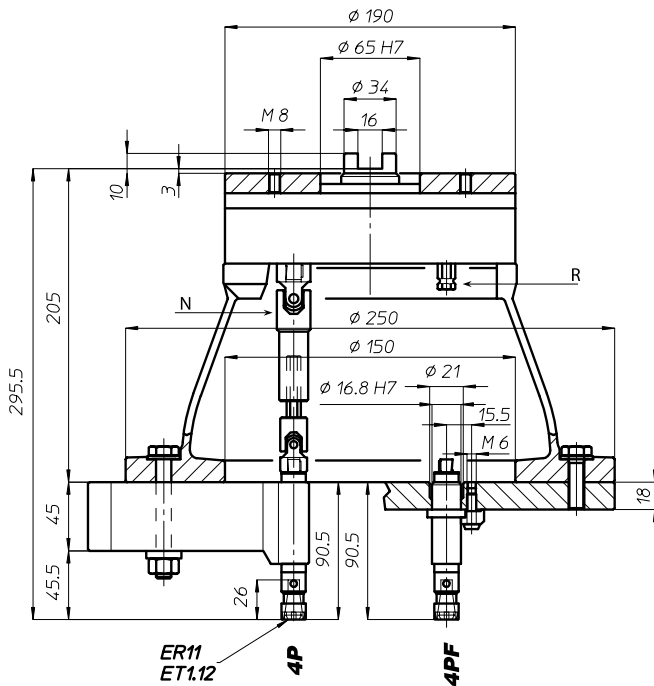
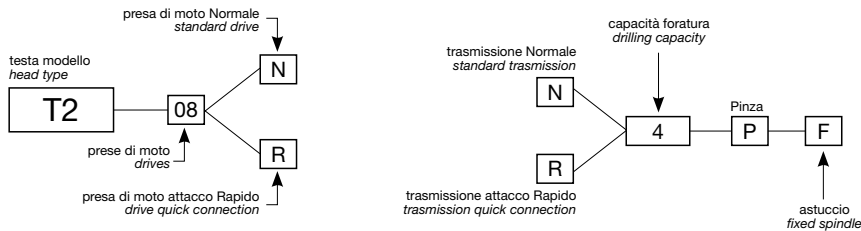
8-2



T4

Codice testa
Head code

Codice mandrino
Spindle code



N° prese di moto
Nr. spindle drives

08-12



Rapporto
Ratio

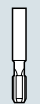
1-1



Capacità di foratura
Drilling capacity

acciaio R=500 N/mm²: 4

ghisa: GG25: 5



Maschiatura
Tapping

M4



Attacco utensile
Type of spindle

P

ER11



Peso gruppo testa
Head weight

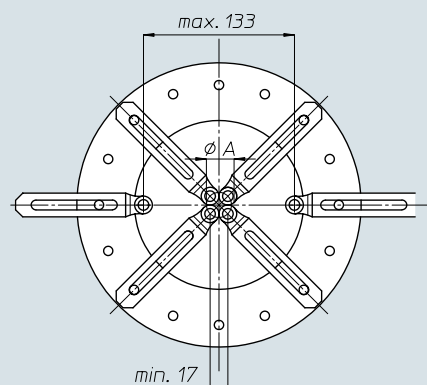
Kg 9,5



Peso gruppo mandrino
Spindle-set weight

Kg 1

area di lavoro
working area



ø A	n° mandrini n° spindles
20	3
24,5	4
29,5	5
34,5	6
39,5	7
45	8



BAH

TA.CP

TA

MO

HT

VH

TSI/TSX

T

MT-T-C-TC3

Accessori
Accessories

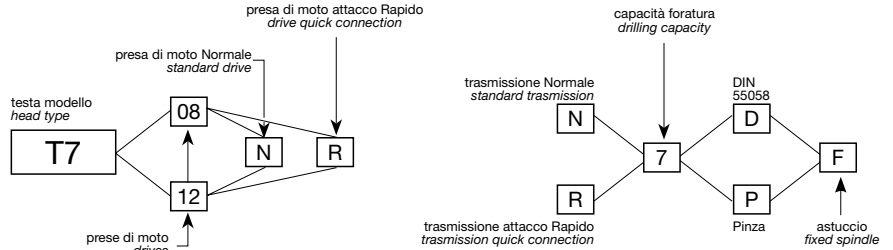
Appendice tecnica
Technical supplement

8-3

T7

Codice testa
Head code

Codice mandrino
Spindle code



N° prese di moto
Nr. spindle drives

08-12

Rapporto
Ratio

1-1

Capacità di foratura
Drilling capacity
acciaio R=500 N/mm²
ghisa: GG25

6
7

Maschiatura
Tapping

M5

Attacco utensile
Type of spindle

D
P

DIN 55058 Ø10
ER11

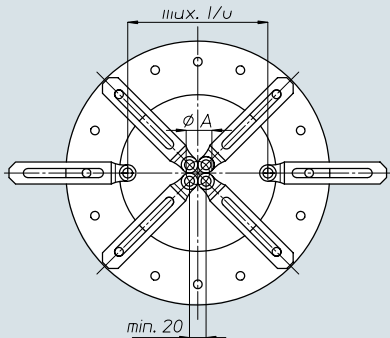
Peso gruppo testa
Head weight

Kg 10

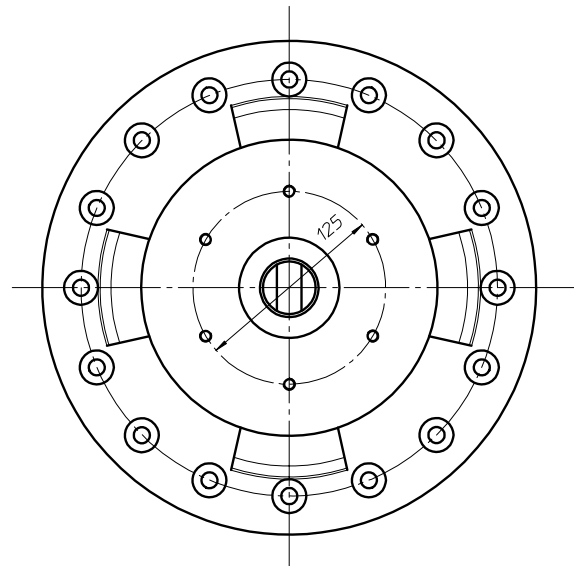
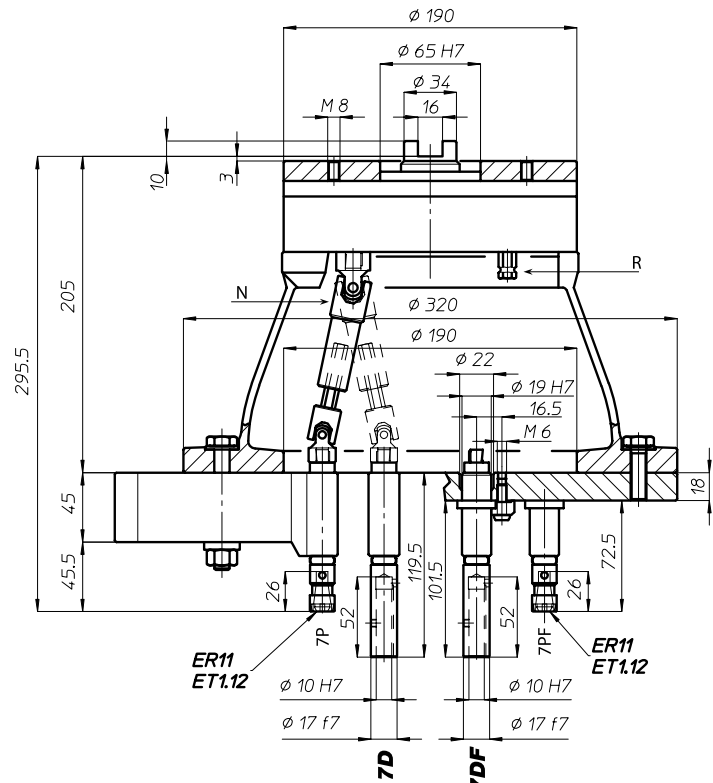
Peso gruppo mandrino
Spindle-set weight

Kg 1,1

area di lavoro working area



ø A	n° mandrini n° spindles
23,5	3
28,5	4
34,5	5
40,5	6
46,5	7
52,5	8
59	9
65,5	10
71,5	11
77,5	12



BAH

TA-CP

TA

MO

HT

VH

TSI/TSX

T

MT-TC-TC3

Accessori
Accessories

Appendice tecnica
Technical supplement

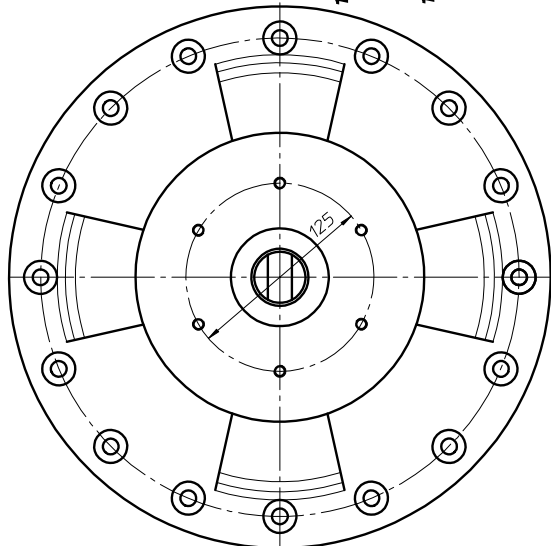
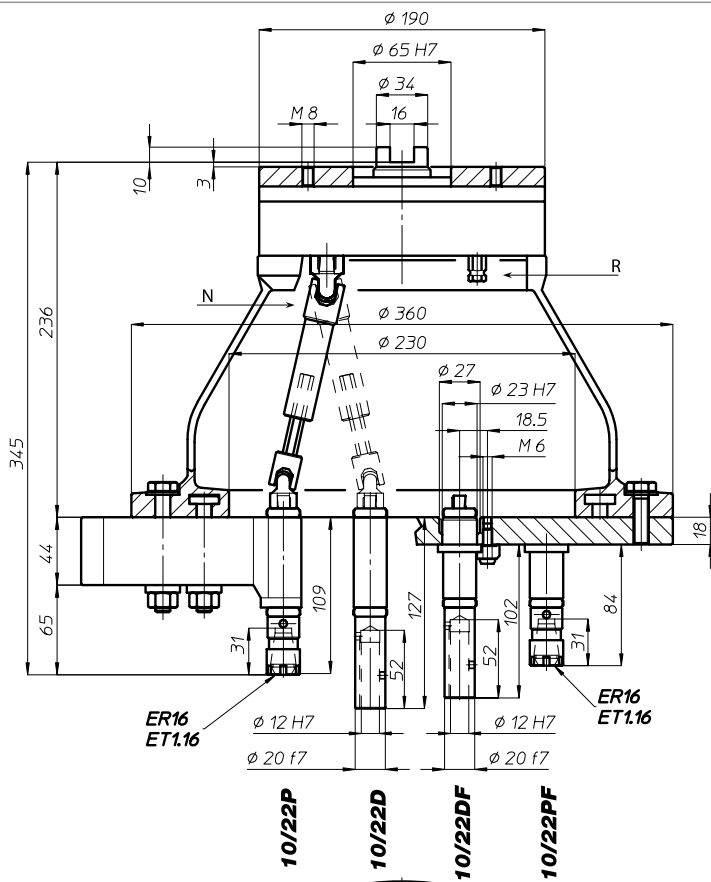
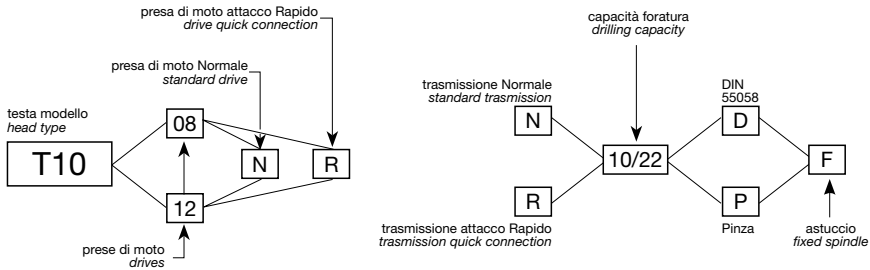
8-4



T10

Codice testa
Head code

Codice mandrino
Spindle code



N° prese di moto
Nr. spindle drives

08-12



Rapporto
Ratio

1-1



Capacità di foratura
Drilling capacity
acciaio R=500 N/mm²
ghisa: GG25

8
10



Maschiatura
Tapping

M6



Attacco utensile
Type of spindle

D

P

DIN 55058 Ø12
ER16



Peso gruppo testa
Head weight

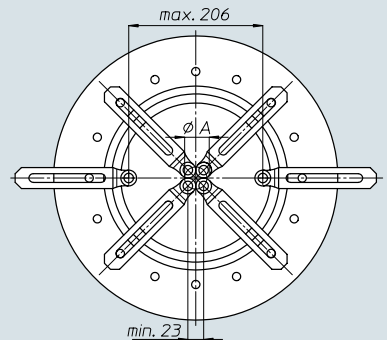
Kg 12



Peso gruppo mandrino
Spindle-set weight

Kg 1,5

area di lavoro
working area



Ø A	n° mandrini n° spindles
27	3
33	4
39,5	5
46,5	6
53,5	7
60,5	8
67,5	9
75	10
82	11
89,5	12



BAH

TA.CP

TA

MO

HT

VH

TSI/TSX

T

MT-TC-TC3

Accessori
Accessories

Appendice tecnica
Technical supplement

8-5

T12-TS12



Codice testa
Head code

Codice mandrino
Spindle code

N° prese di moto
Nr. spindle drives

08-12

Rapporto
Ratio

1-1

Capacità di foratura
Drilling capacity
acciaio R=500 N/mm²
ghisa: GG25

10
12

Maschiatura
Tapping

M8

Attacco utensile
Type of spindle

DIN 55058 Ø16
ER20

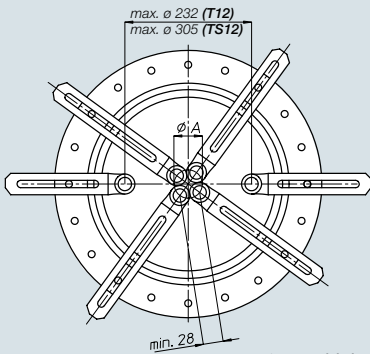
Peso gruppo testa
Head weight

T12: Kg 20
TS12: Kg 22,5

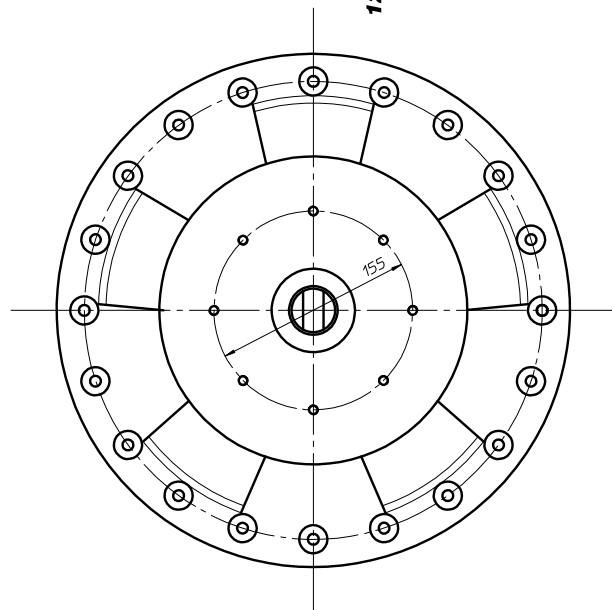
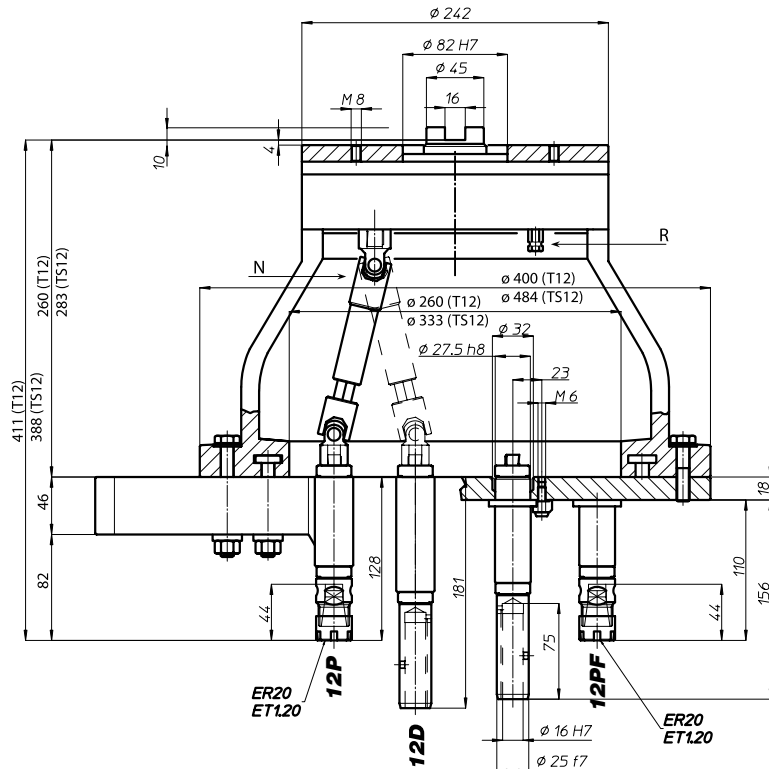
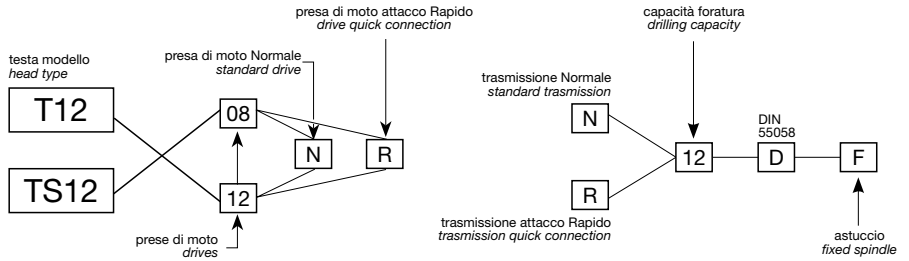
Peso gruppo mandrino
Spindle-set weight

Kg 2

area di lavoro working area



ø A	n° mandrini n° spindles
33	3
40	4
48	5
56,5	6
65	7
74	8
82,5	9
91	10
100	11
108,5	12



BAH

TA-CP

TA

MO

HT

VH

TSI/TSX

T

MT-TC-TC3

Accessori
Accessories

Appendice tecnica
Technical supplement

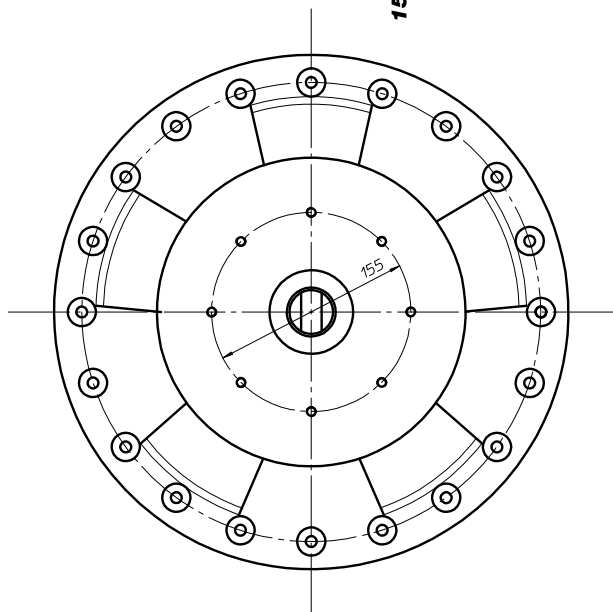
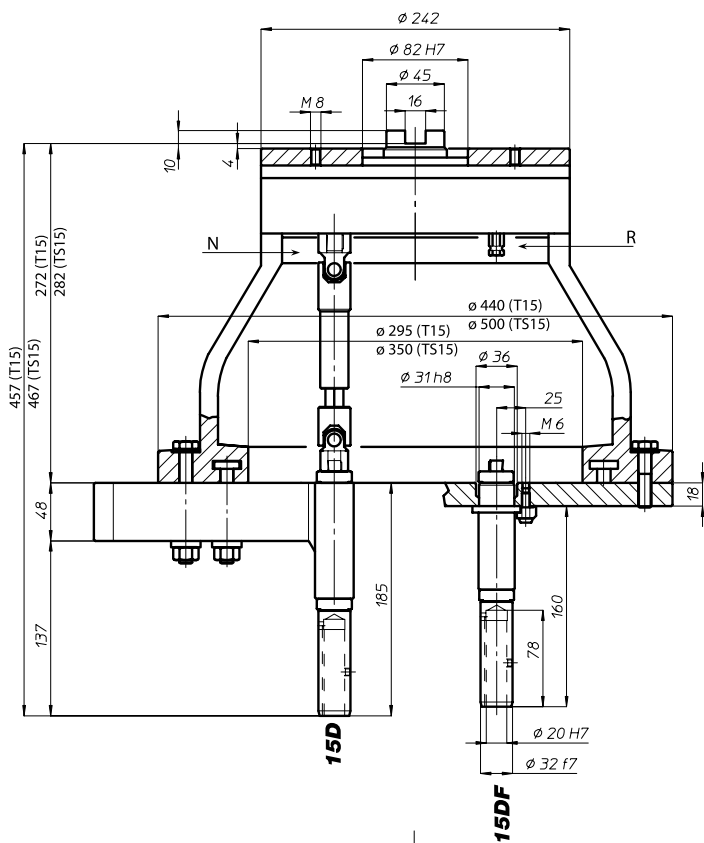
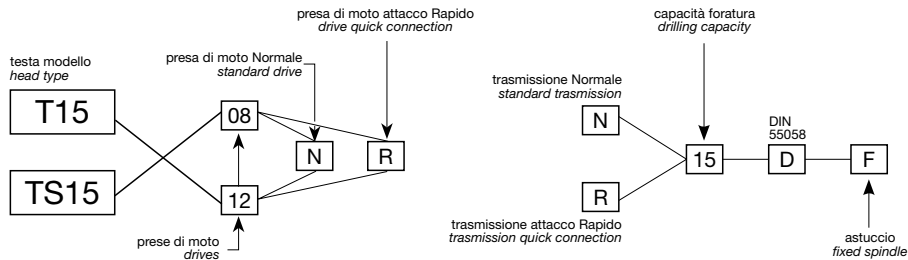
8-6



T15-TS15

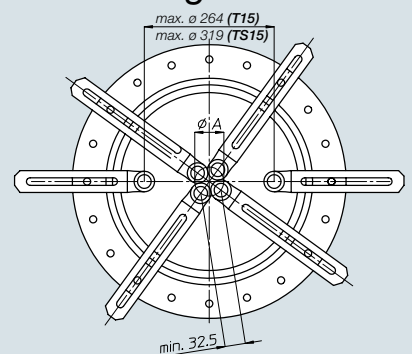
Codice testa
Head code

Codice mandrino
Spindle code



	N° prese di moto Nr. spindle drives	08-12
	Rapporto Ratio	1-1
	Capacità di foratura Drilling capacity acciaio R=500 N/mm ² ghisa: GG25	13 15
	Maschiatura Tapping	M12
	Attacco utensile Type of spindle D	DIN 55058 Ø20
	Peso gruppo testa Head weight	T15: Kg 21,5 TS15: Kg 24,5
	Peso gruppo mandrino Spindle-set weight	Kg 2,6

area di lavoro working area



Ø A	n° mandrini n° spindles
38	3
46,5	4
56	5
65,5	6
75,5	7
85,5	8
95,5	9
105,5	10
116	11
126	12



BAH

TA.CP

TA

MO

HT

VH

TSI/TSX

T

MT-TC-TC3

Accessori
Accessories

Appendice tecnica
Technical supplement

8-7

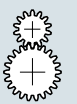
T18-TS18

Codice testa
Head code

Codice mandrino
Spindle code

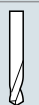
N° prese di moto
Nr. spindle drives

08



Rapporto
Ratio

1-1



Capacità di foratura
Drilling capacity
acciaio R=500 N/mm²
ghisa: GG25

16

18



Maschiatura
Tapping

M14



Attacco utensile
Type of spindle
D

DIN 55058 Ø25



Peso gruppo testa
Head weight

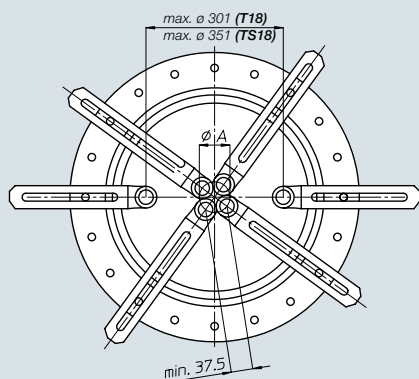
T18: Kg 25
TS18: Kg 26,5



Peso gruppo mandrino
Spindle-set weight

Kg 3,3

area di lavoro
working area

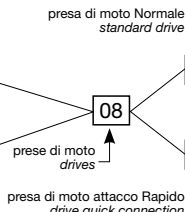


Ø A	n° mandrini n° spindles
44	3
53,5	4
64,5	5
75,5	6
87	7
98,5	8

testa modello
head type

T18

TS18



trasmissione Normale
standard trasmission

N

R

trasmissione attacco Rapido
transmission quick connection

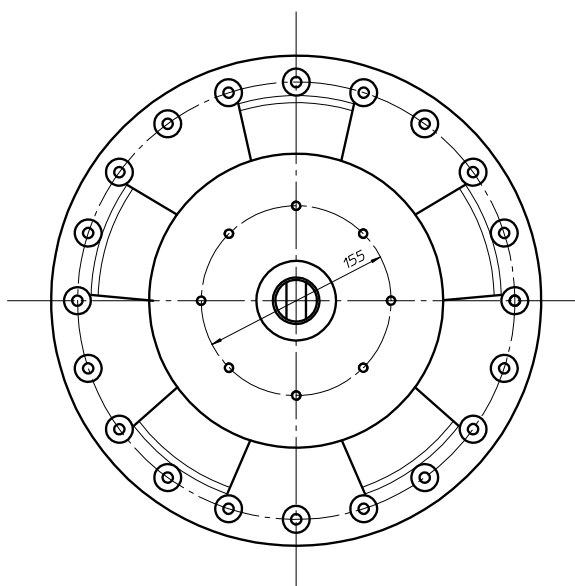
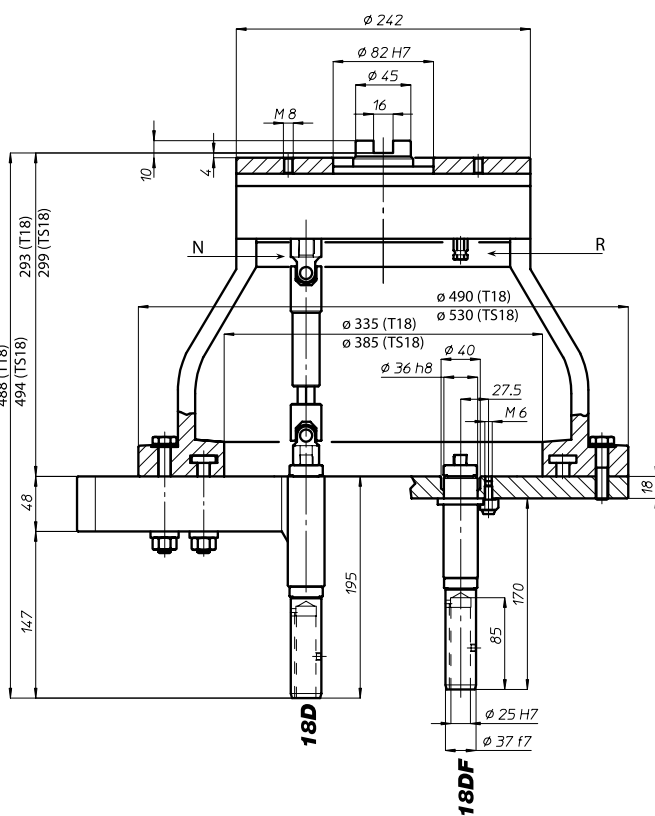
capacità foratura
drilling capacity

N

R

F

astuccio
fixed spindle



BAH

TA-CP

TA

MO

HT

VH

TSI/TSX

T

MT-TC-TC3

Accessori
Accessories

Appendice tecnica
Technical supplement

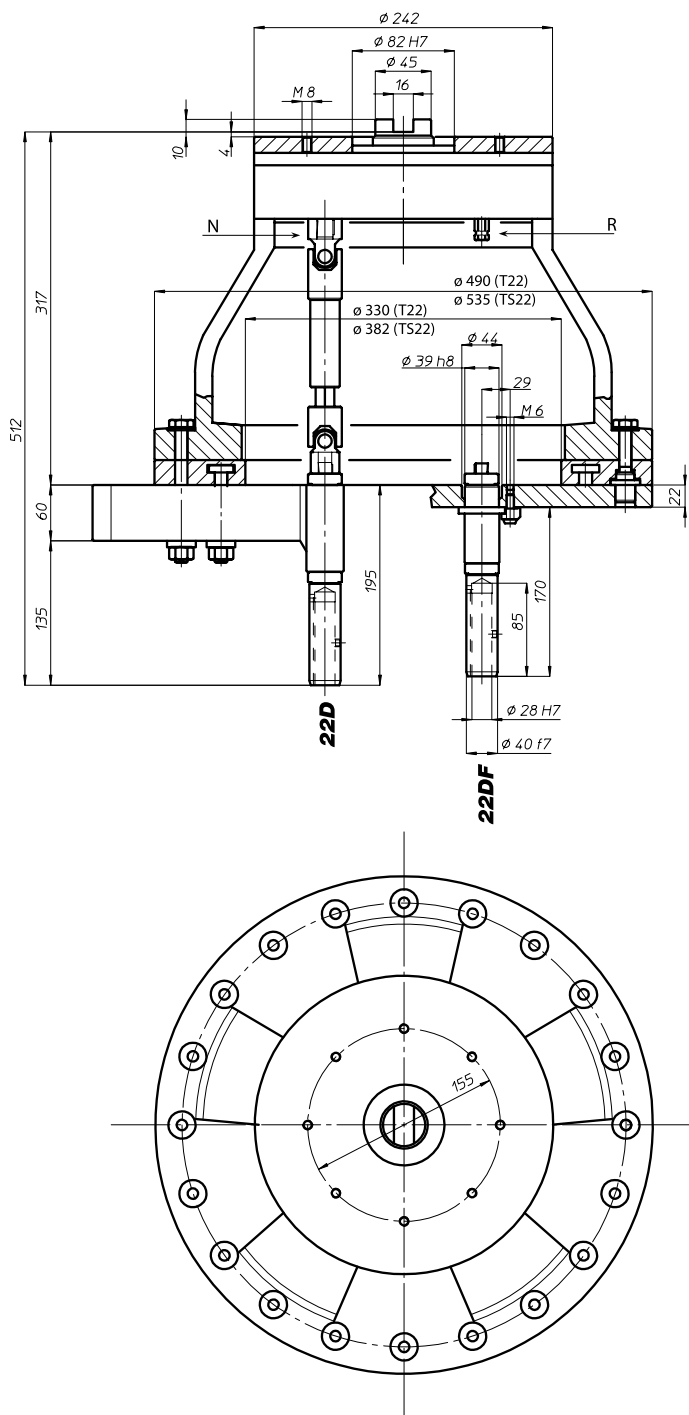
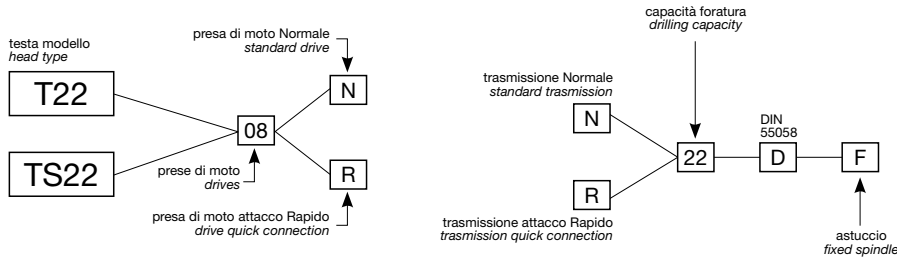
8-8



T22-TS22

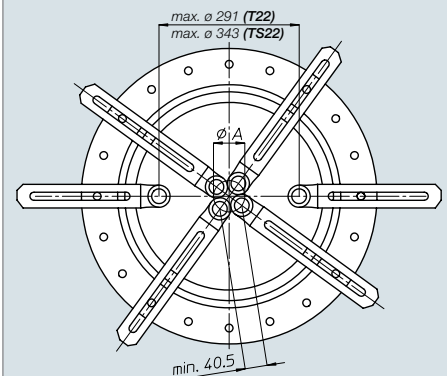
Codice testa
Head code

Codice mandrino
Spindle code



	N° prese di moto Nr. spindle drives	08
	Rapporto Ratio	1-1
	Capacità di foratura Drilling capacity acciaio R=500 N/mm ² ghisa: GG25	20 22
	Maschiatura Tapping	M16
	Attacco utensile Type of spindle D	DIN 55058 $\phi 28$
	Peso gruppo testa Head weight	T22: Kg 38,5 TS22: Kg 41
	Peso gruppo mandrino Spindle-set weight	Kg 5,5

area di lavoro working area



ϕA	n° mandrini n° spindles
47,5	3
58	4
69,5	5
81,5	6
94	7
106,5	8



BAH

TA.CP

TA

MO

HT

VH

TSI/TSX

T

MT-TC-TC3

Accessori
Accessories

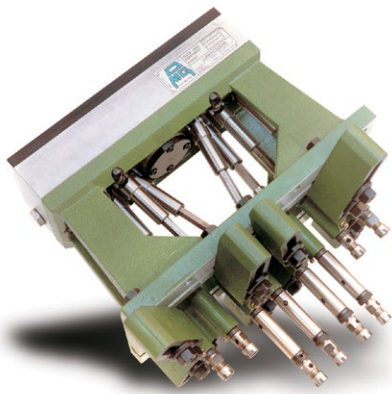
Appendice tecnica
Technical supplement

8-9

TL20/4

Codice testa
Head code

Codice mandrino
Spindle code



N° prese di moto
Nr. spindle drives

08



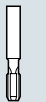
Rapporto
Ratio

1-1



Capacità di foratura
Drilling capacity
acciaio R=500 N/mm²
ghisa: GG25

4
5



Maschiatura
Tapping

M4



Attacco utensile
Type of spindle
P

ER11



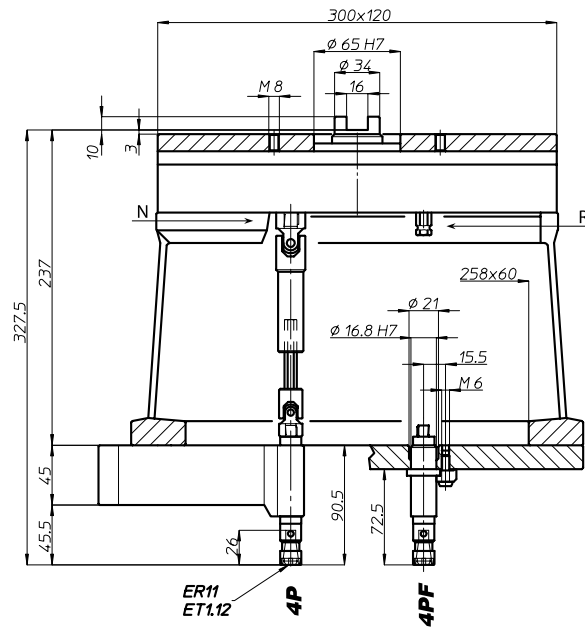
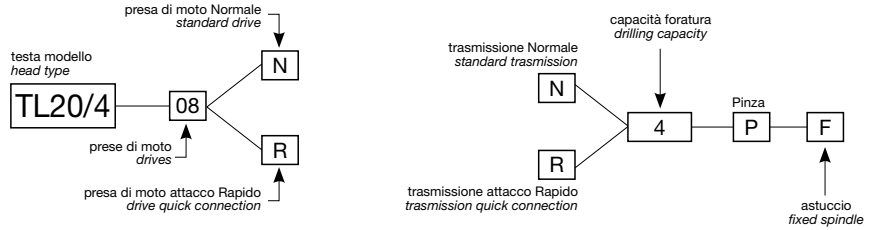
Peso gruppo testa
Head weight

Kg 13,5

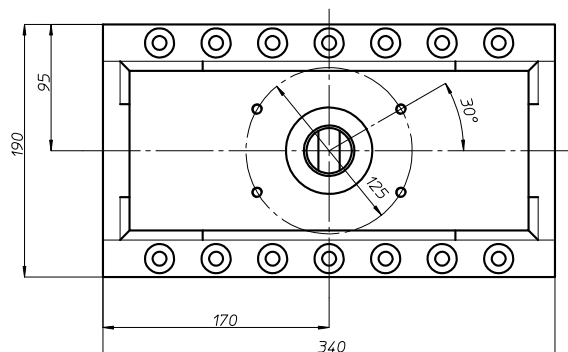
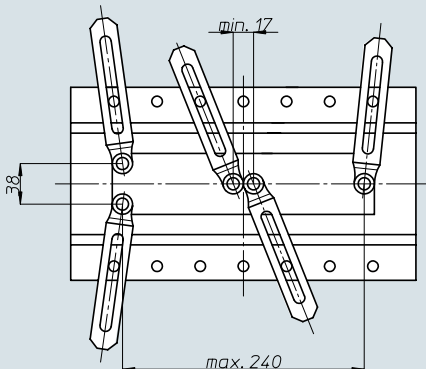


Peso gruppo mandrino
Spindle-set weight

Kg 1



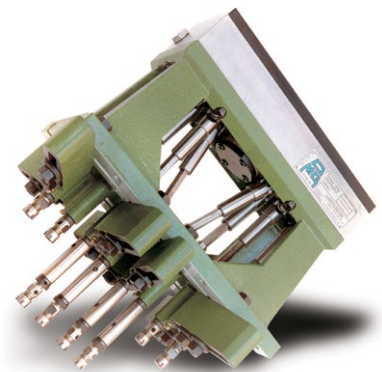
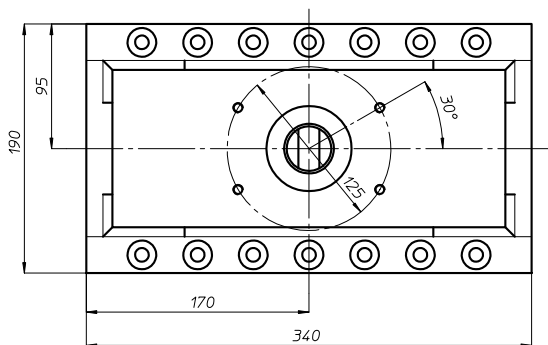
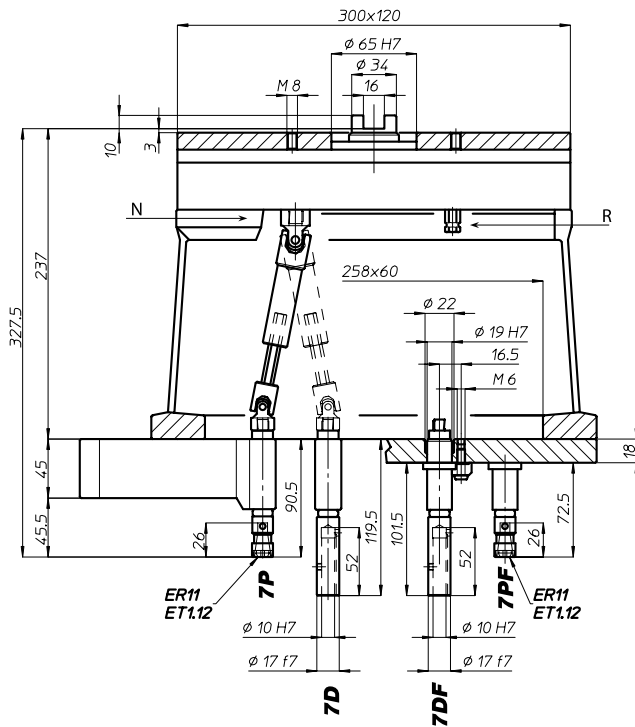
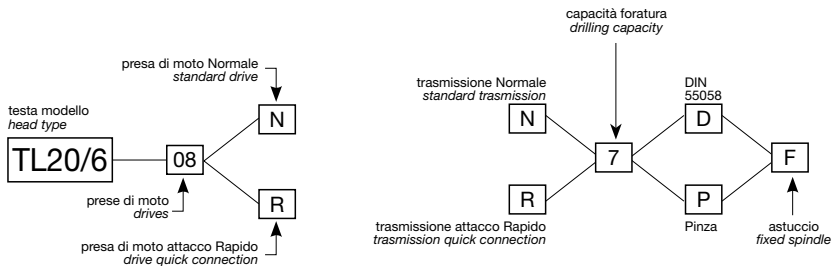
area di lavoro
working area



TL20/6

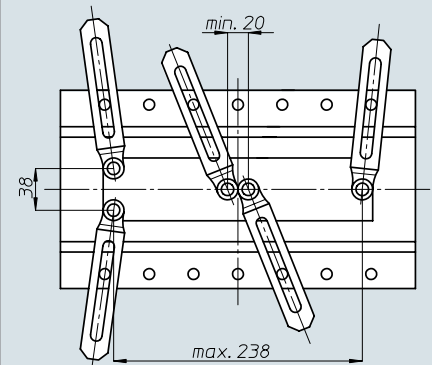
Codice testa
Head code

Codice mandrino
Spindle code



	N° prese di moto Nr. spindle drives	08
	Rapporto Ratio	1-1
	Capacità di foratura Drilling capacity acciaio R=500 N/mm ² ghisa: GG25	6 7
	Maschiatura Tapping	M5
	Attacco utensile Type of spindle D P	DIN 55058 $\phi 10$ ER11
	Peso gruppo testa Head weight	Kg 13,5
	Peso gruppo mandrino Spindle-set weight	Kg 1

area di lavoro
working area



BAH

TA.CP

TA

MO

HT

VH

TSI/TSX

T

MT-TC-TC3

Accessori
Accessories

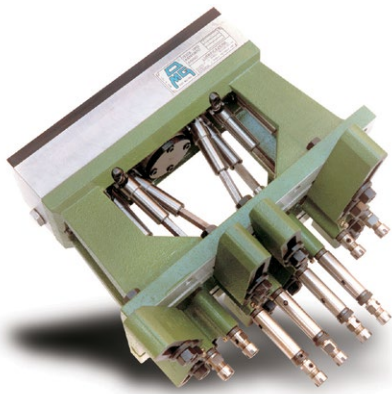
Appendice tecnica
Technical supplement



TL20/8

Codice testa
Head code

Codice mandrino
Spindle code



N° prese di moto
Nr. spindle drives

08



Rapporto
Ratio

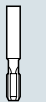
1-1



Capacità di foratura
Drilling capacity
acciaio R=500 N/mm²
ghisa: GG25

8

10



Maschiatura
Tapping

M6



Attacco utensile
Type of spindle

D

DIN 55058 Ø12

P

ER16



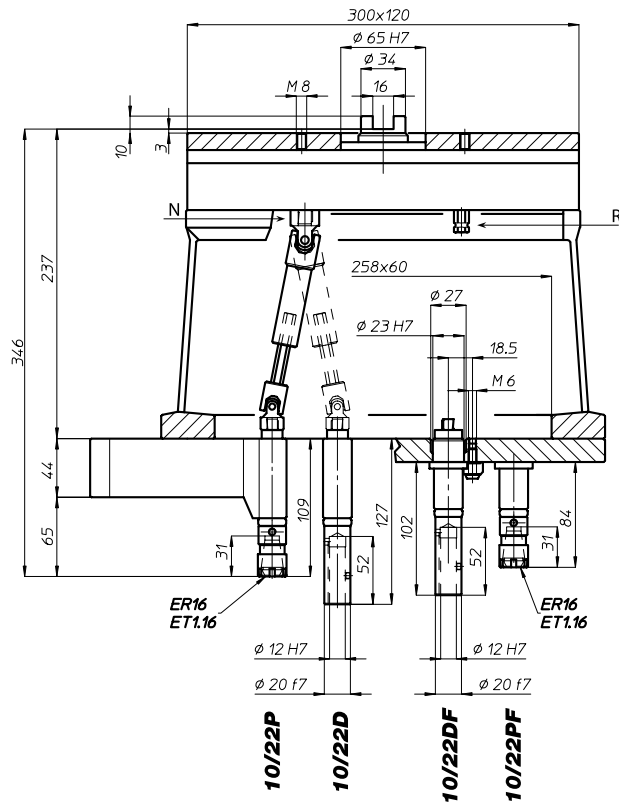
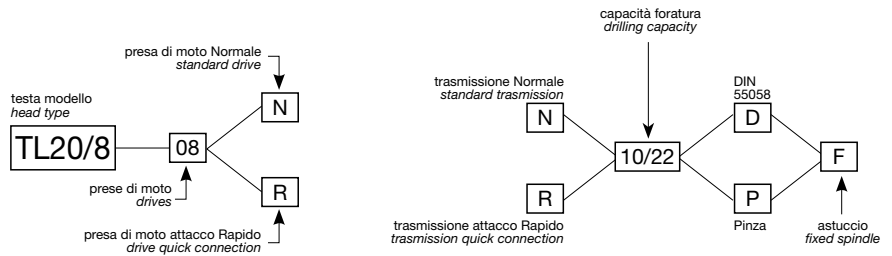
Peso gruppo testa
Head weight

Kg 13,5

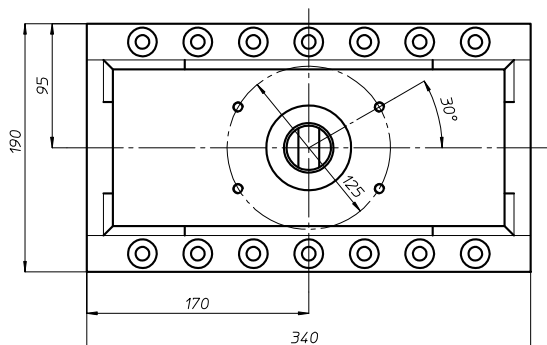
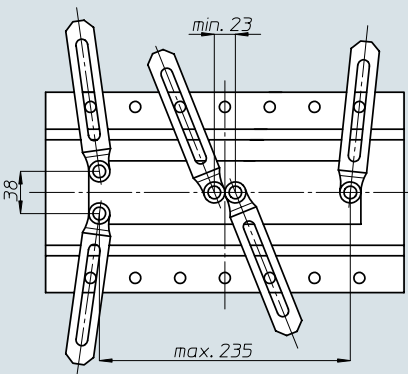


Peso gruppo mandrino
Spindle-set weight

Kg 1,5



area di lavoro
working area



BAH

TA-CP

TA

MO

HT

VH

TSI/TSX

T

MT-TC-TC3

Accessori
Accessories

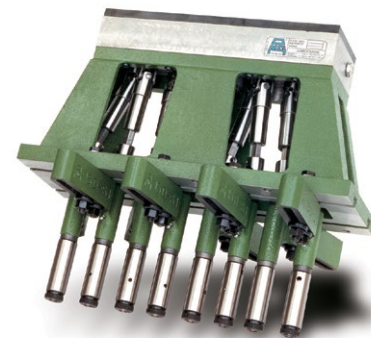
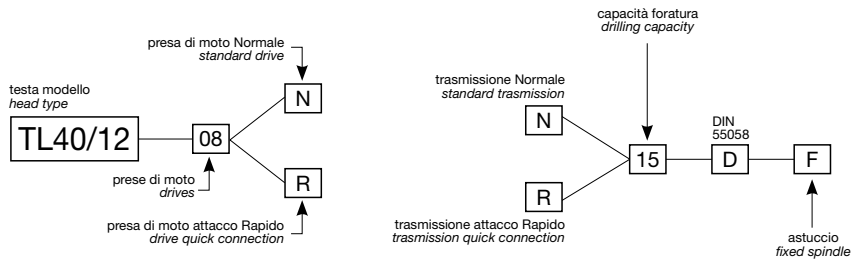
Appendice tecnica
Technical supplement



TL40/12

Codice testa
Head code

Codice mandrino
Spindle code



N° prese di moto
Nr. spindle drives

08



Rapporto
Ratio

1-1



Capacità di foratura
Drilling capacity
acciaio R=500 N/mm²
ghisa: GG25

13
15



Maschiatura
Tapping

M12



Attacco utensile
Type of spindle

D DIN 55058 Ø20



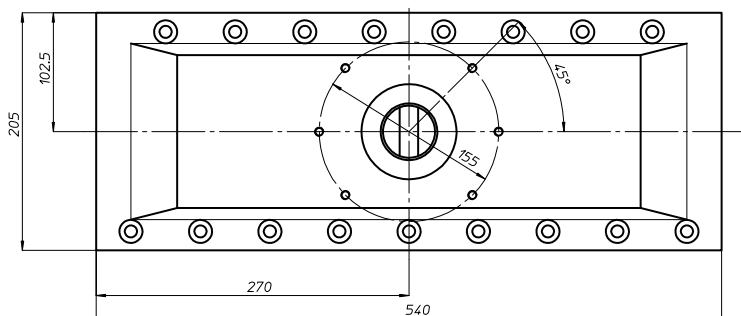
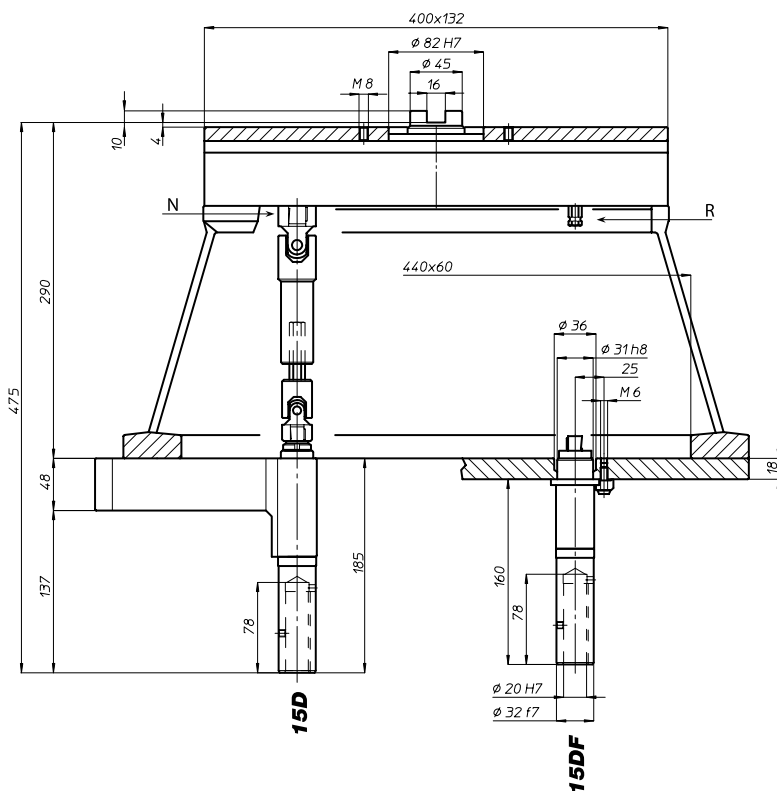
Peso gruppo testa
Head weight

Kg 25

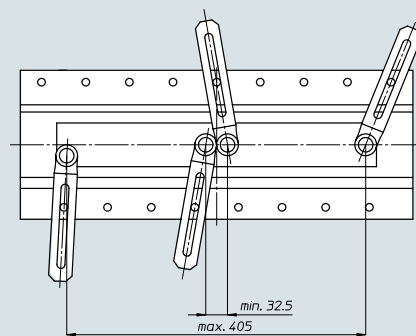


Peso gruppo mandrino
Spindle-set weight

Kg 2,5



area di lavoro
working area



BAH

TA-CP

TA

MO

HT

VH

TSI/TSX

T

MT-TC-TC3

Accessori
Accessories

Appendice tecnica
Technical supplement

TL40/16



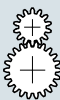
Codice testa
Head code

Codice mandrino
Spindle code



N° prese di moto
Nr. spindle drives

08



Rapporto
Ratio

1-1



Capacità di foratura
Drilling capacity
acciaio R=500 N/mm²
ghisa: GG25

16
18



Maschiatura
Tapping

M14



Attacco utensile
Type of spindle

D DIN 55058 Ø25



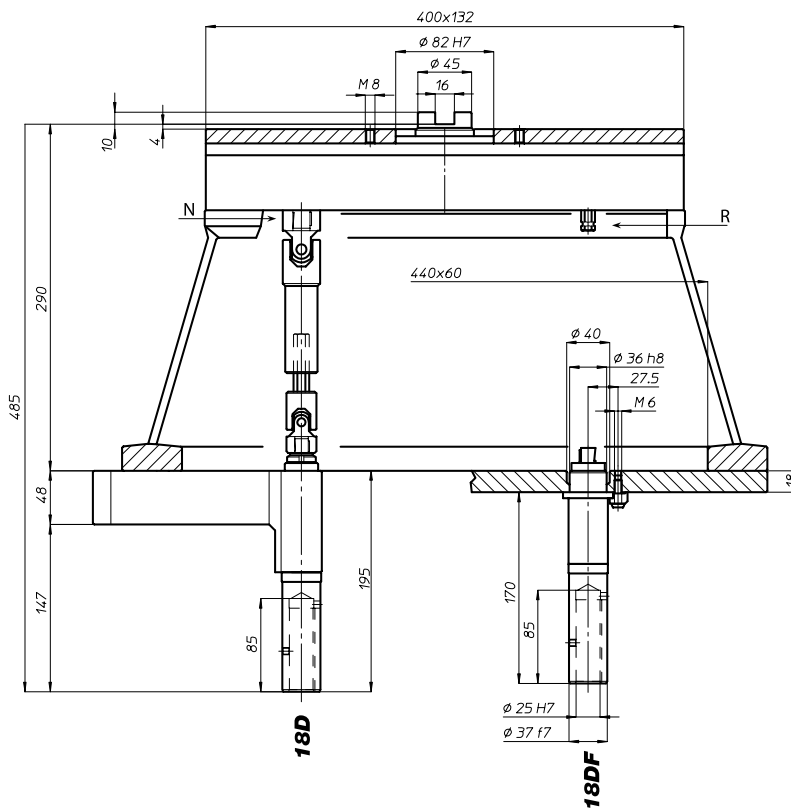
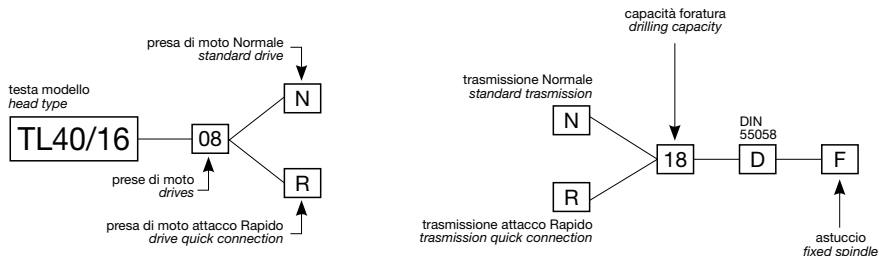
Peso gruppo testa
Head weight

Kg 26

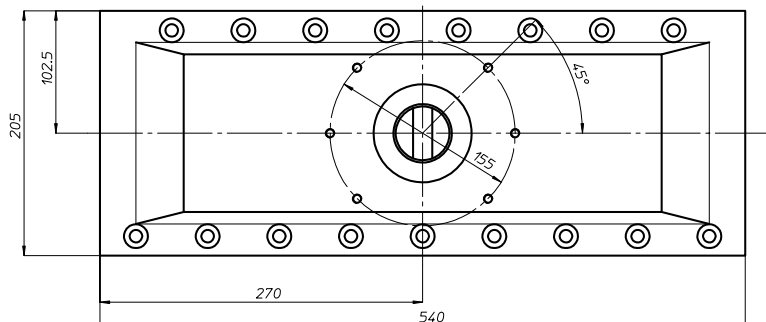
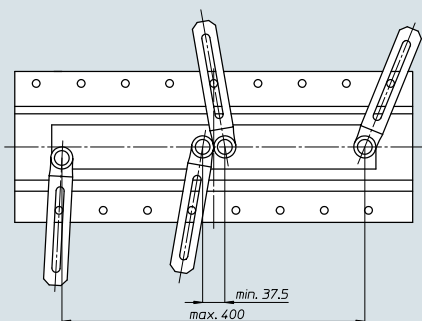


Peso gruppo mandrino
Spindle-set weight

Kg 2,5



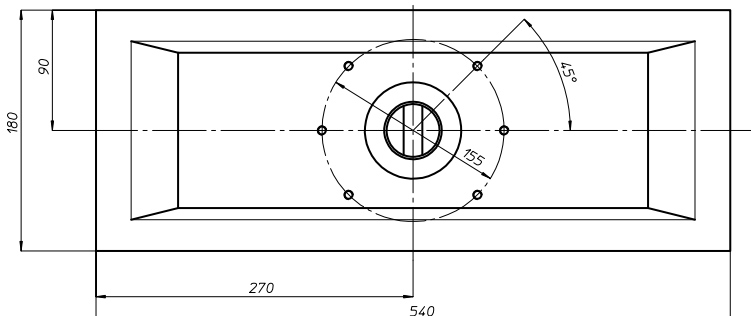
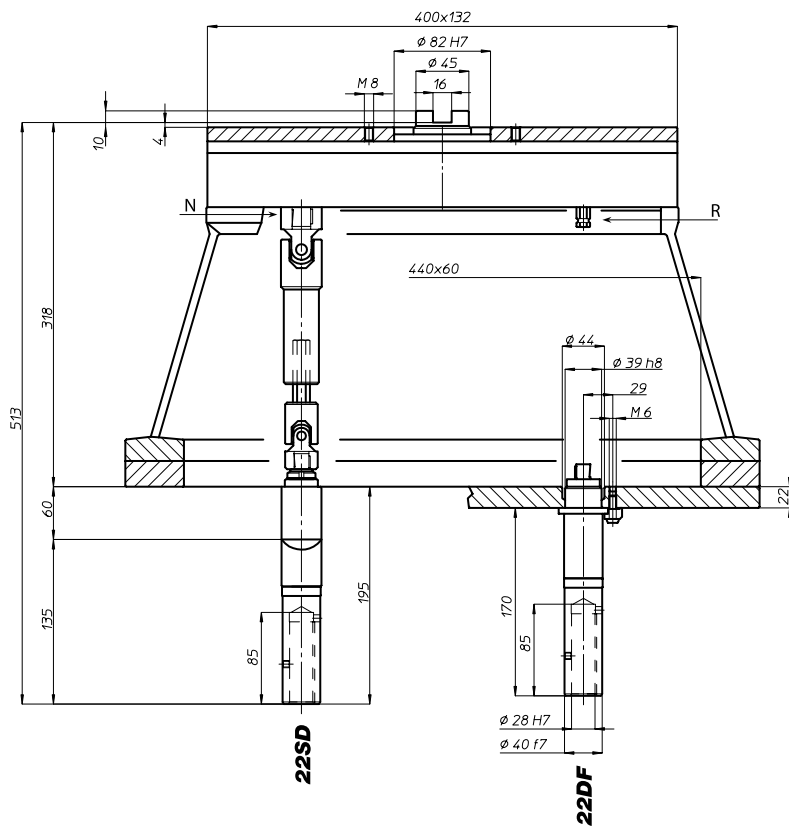
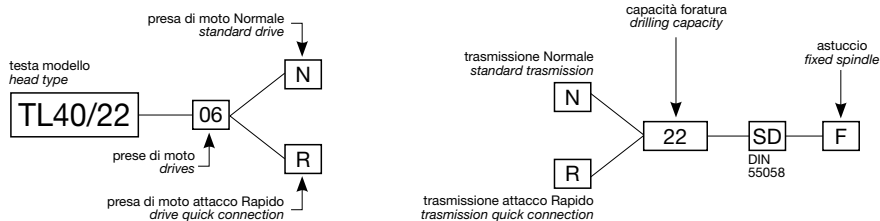
area di lavoro
working area



TL40/22

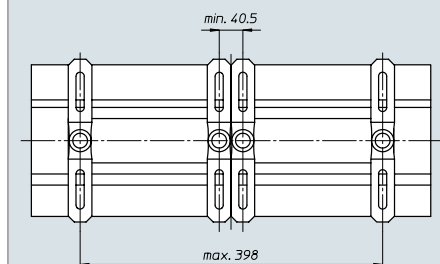
Codice testa
Head code

Codice mandrino
Spindle code



	N° preze di moto Nr. spindle drives	06
	Rapporto Ratio	1-1
	Capacità di foratura Drilling capacity acciaio R=500 N/mm ² ghisa: GG25	20 22
	Maschiatura Tapping	M16
	Attacco utensile Type of spindle D	DIN 55058 Ø28
	Peso gruppo testa Head weight	Kg 37
	Peso gruppo mandrino Spindle-set weight	Kg 5

area di lavoro
working area



BAH

TA-CP

TA

MO

HT

VH

TSI/TSX

T

MT-TC-TC3

Accessori
Accessories

Appendice tecnica
Technical supplement



TL60/12



Codice testa
Head code

Codice mandrino
Spindle code



N° prese di moto
Nr. spindle drives

08-12



Rapporto
Ratio

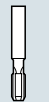
1-1



Capacità di foratura
Drilling capacity
acciaio R=500 N/mm²
ghisa: GG25

13

15



Maschiatura
Tapping

M12



Attacco utensile
Type of spindle

D DIN 55058 Ø20



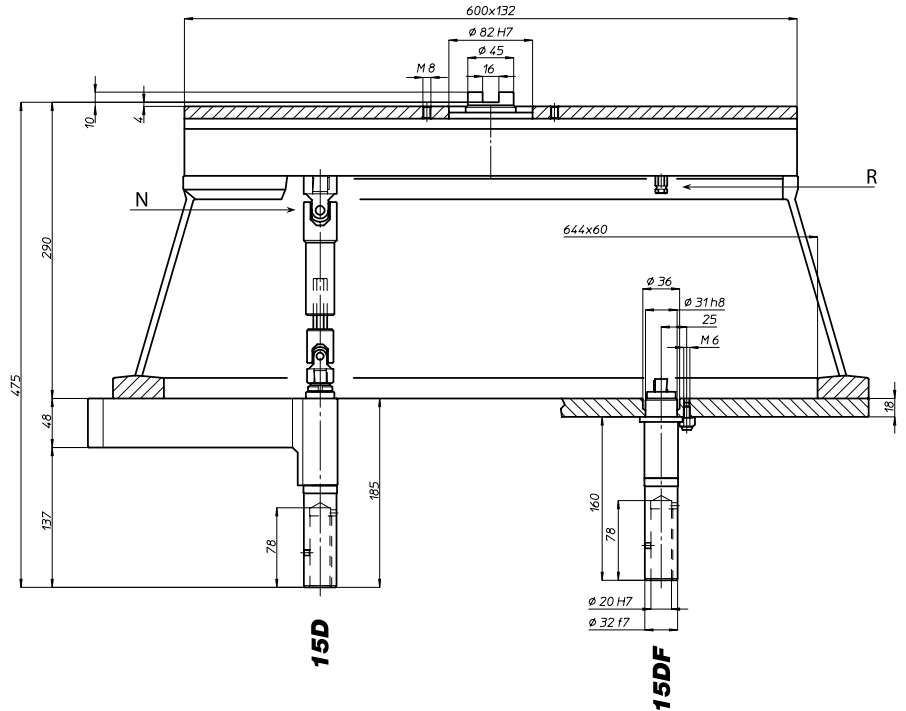
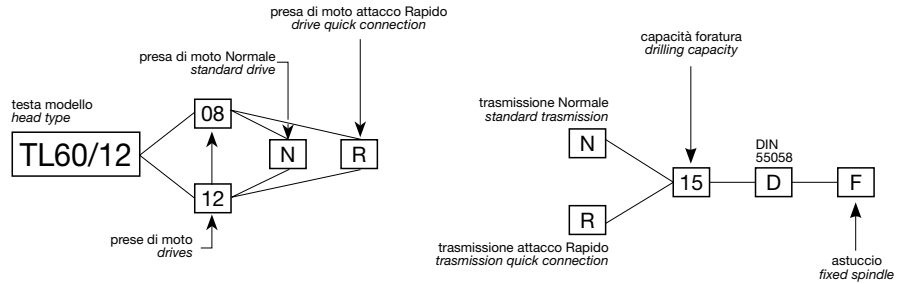
Peso gruppo testa
Head weight

Kg 34,5

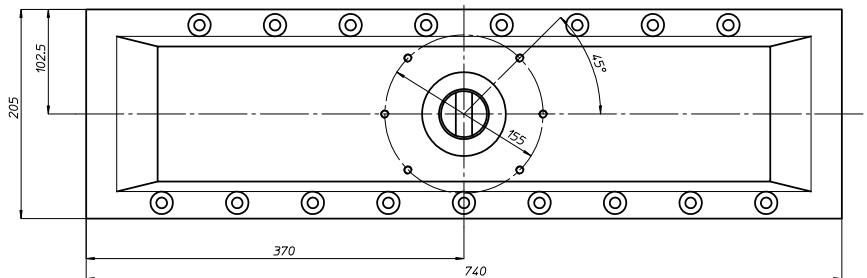
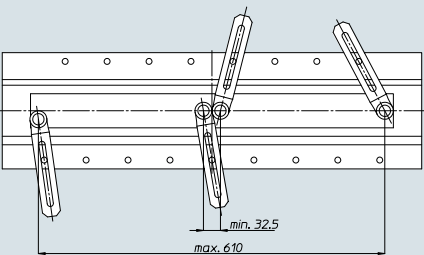


Peso gruppo mandrino
Spindle-set weight

Kg 2,5



area di lavoro
working area



Accessori
Accessories

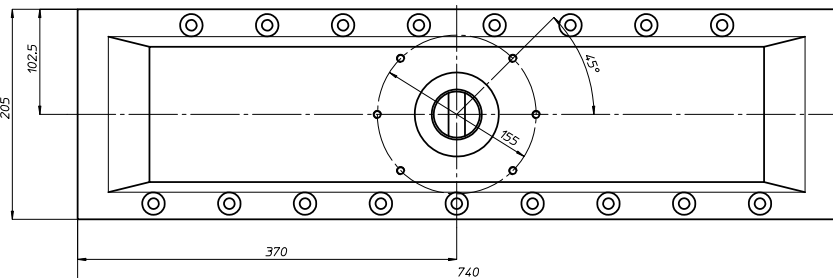
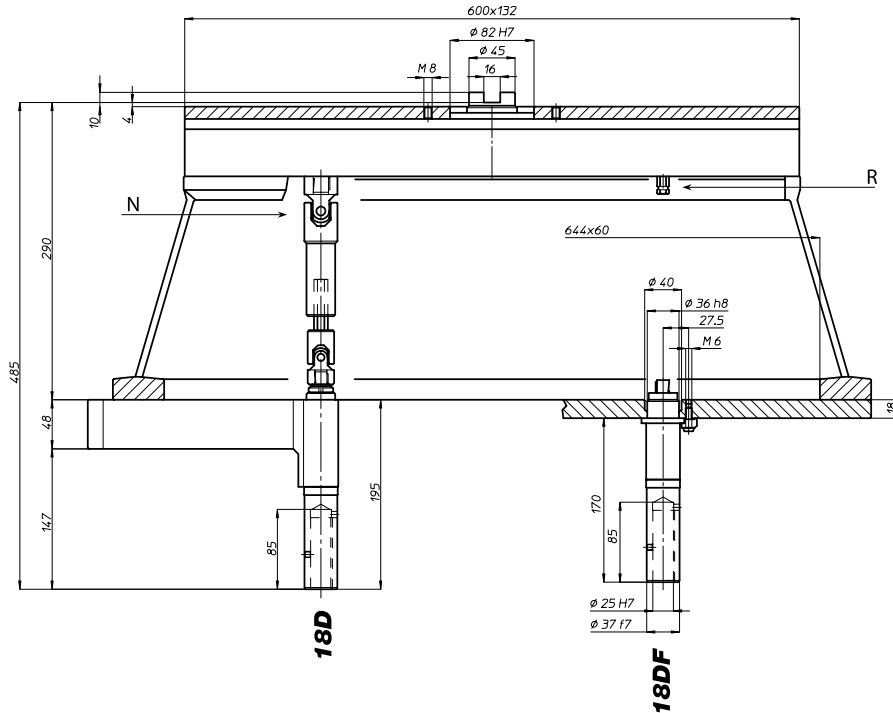
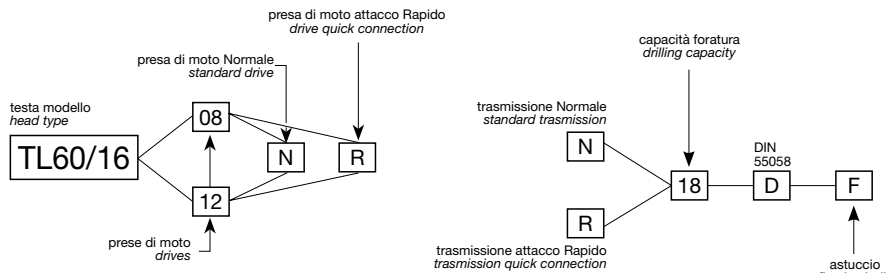
Appendice tecnica
Technical supplement



TL60/16

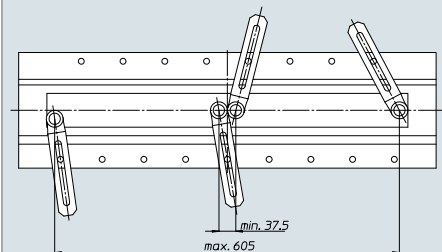
Codice testa
Head code

Codice mandrino
Spindle code



	N° prese di moto Nr. spindle drives	08-12
	Rapporto Ratio	1-1
	Capacità di foratura Drilling capacity acciaio R=500 N/mm ² ghisa: GG25	16 18
	Maschiatura Tapping	M14
	Attacco utensile Type of spindle D	DIN 55058 $\phi 25$
	Peso gruppo testa Head weight	Kg 36
	Peso gruppo mandrino Spindle-set weight	Kg 2,5

area di lavoro
working area



BAH

TA-CP

TA

MO

HT

VH

TSI/TSX

T

MT-TC-TC3

Accessori
Accessories

Appendice tecnica
Technical supplement



TL60/22



Codice testa
Head code

Codice mandrino
Spindle code



N° prese di moto
Nr. spindle drives

08



Rapporto
Ratio

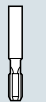
1-1



Capacità di foratura
Drilling capacity
acciaio R=500 N/mm²
ghisa: GG25

20

22



Maschiatura
Tapping

M16



Attacco utensile
Type of spindle

DIN 55058 Ø28



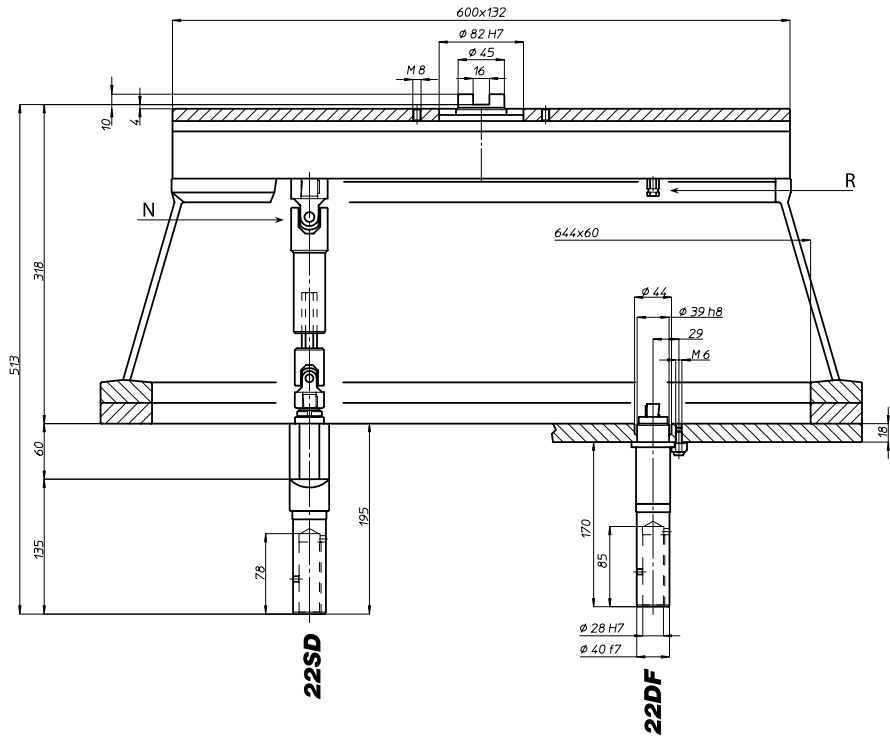
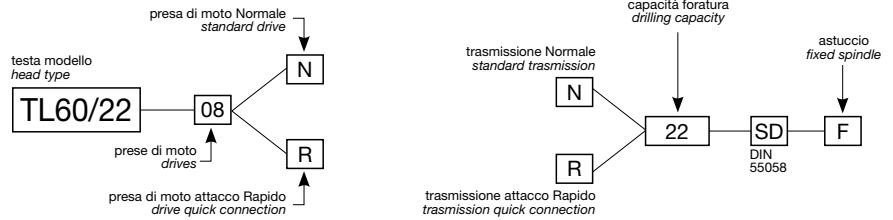
Peso gruppo testa
Head weight

Kg 47,5

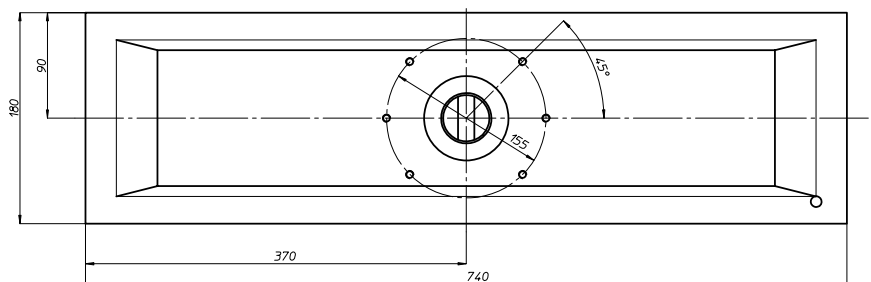
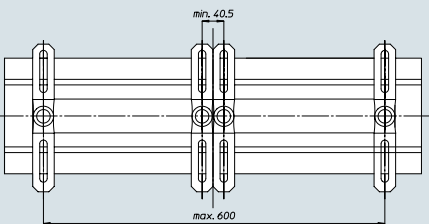


Peso gruppo mandrino
Spindle-set weight

Kg 5



area di lavoro
working area



BAH

TA-CP

TA

MO

HT

VH

TSI/TSX

T

MT-TC-TC3

Accessori
Accessories

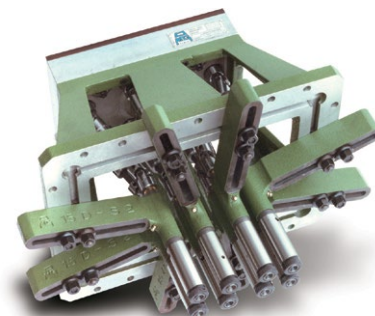
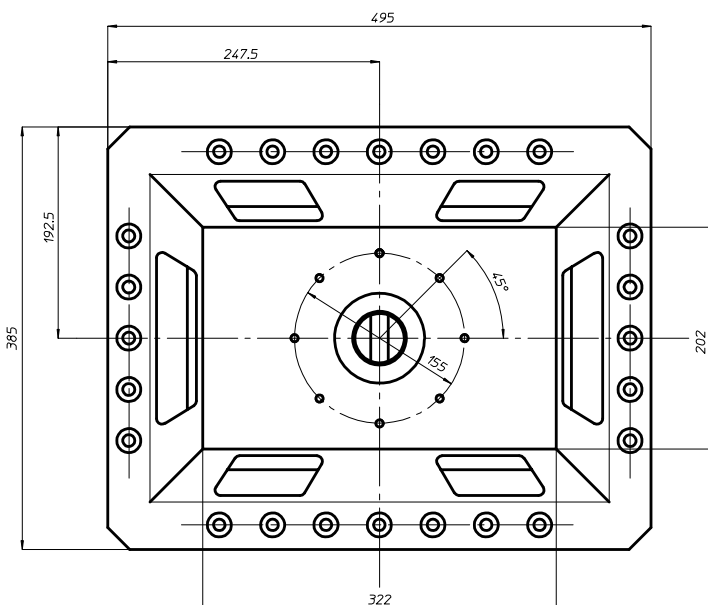
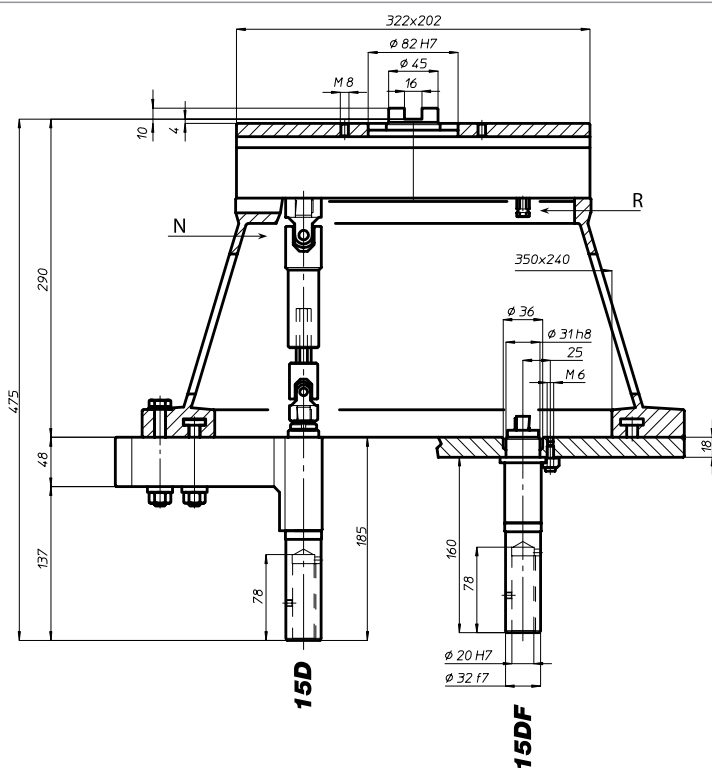
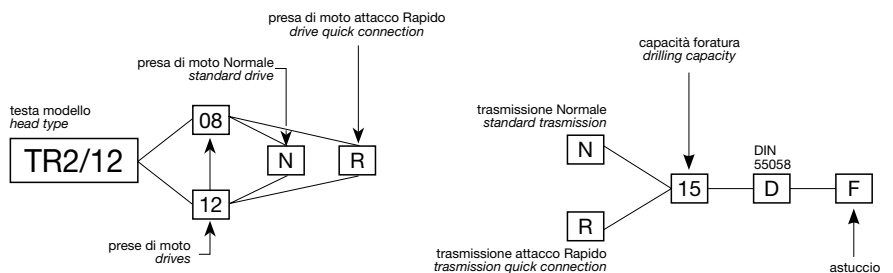
Appendice tecnica
Technical supplement



TR2/12

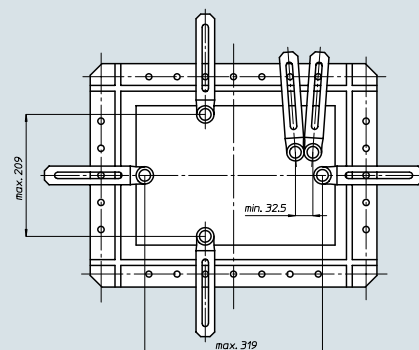
Codice testa
Head code

Codice mandrino
Spindle code



	N° prese di moto Nr. spindle drives	08-12
	Rapporto Ratio	1-1
	Capacità di foratura Drilling capacity acciaio R=500 N/mm ² ghisa: GG25	13 15
	Maschiatura Tapping	M12
	Attacco utensile Type of spindle D	DIN 55058 Ø20
	Peso gruppo testa Head weight	Kg 30
	Peso gruppo mandrino Spindle-set weight	Kg 2,6

area di lavoro
working area



BAH

TA.CP

TA

MO

HT

VH

TSI/TSX

T

MT-TC-TC3

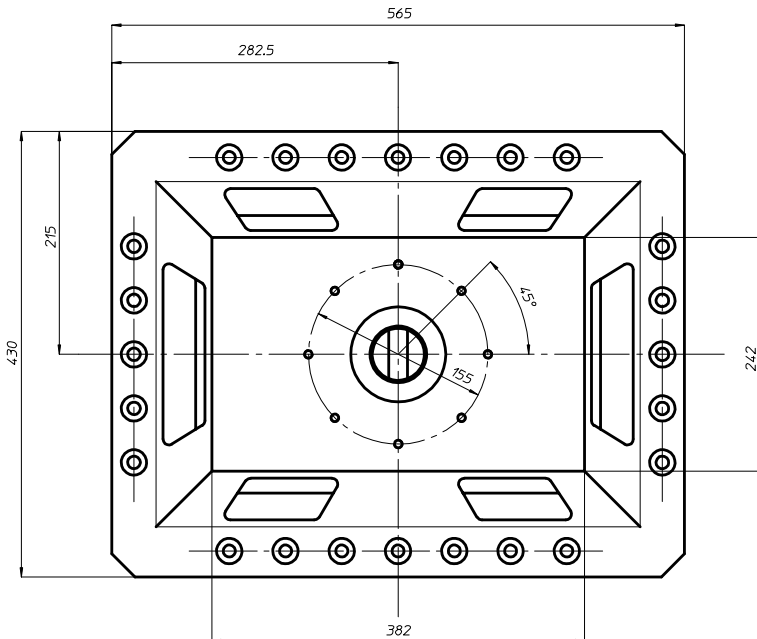
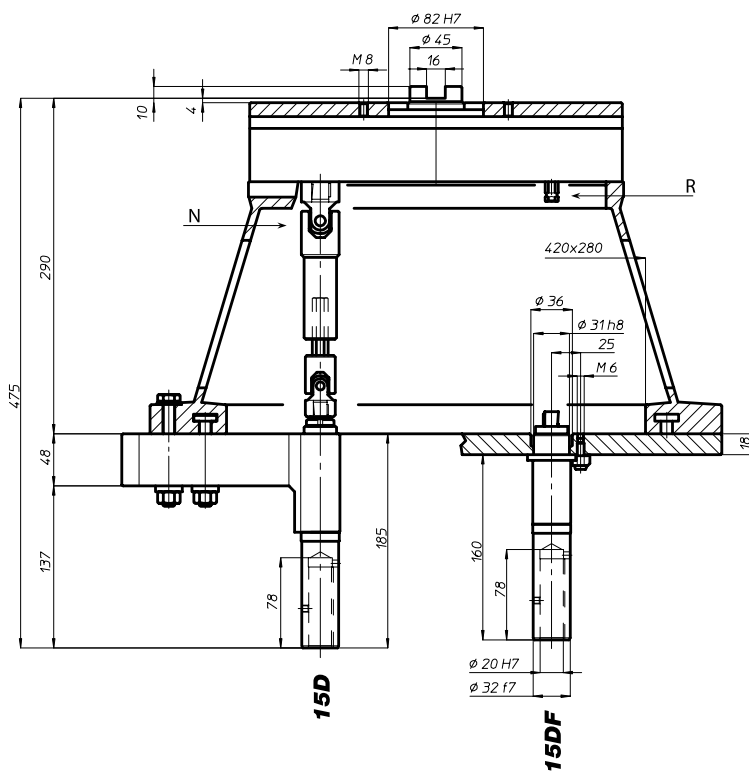
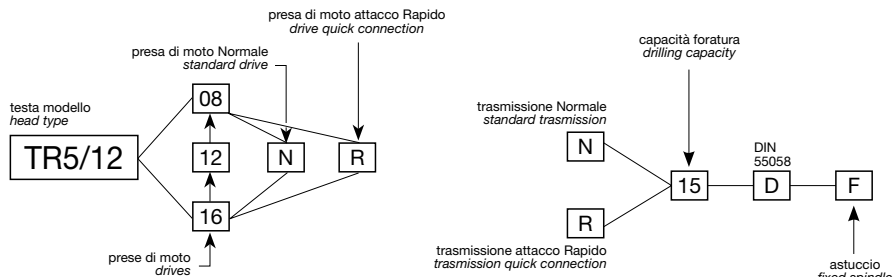
Accessori
Accessories

Appendice tecnica
Technical supplement

TR5/12

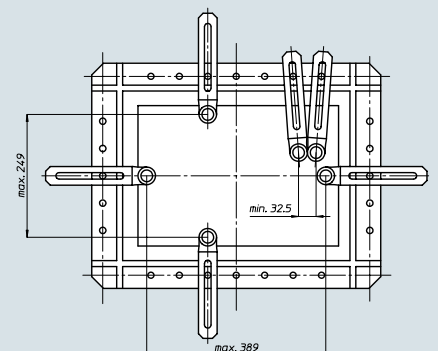
Codice testa
Head code

Codice mandrino
Spindle code



	N° prese di moto Nr. spindle drives	08-12-16
	Rapporto Ratio	1-1
	Capacità di foratura Drilling capacity acciaio R=500 N/mm ² ghisa: GG25	13 15
	Maschiatura Tapping	M12
	Attacco utensile Type of spindle	D DIN 55058 Ø20
	Peso gruppo testa Head weight	Kg 34,5
	Peso gruppo mandrino Spindle-set weight	Kg 2,6

area di lavoro
working area



BAH

TA-CP

TA

MO

HT

VH

TSI/TSX

T

MT-TC-TC3

Accessori
Accessories

Appendice tecnica
Technical supplement

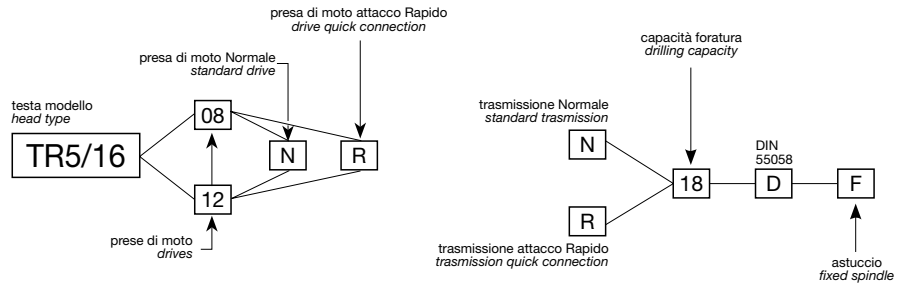
8-21

TR5/16



Codice testa
Head code

Codice mandrino
Spindle code



N° prese di moto
Nr. spindle drives

08-12



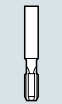
Rapporto
Ratio

1-1



Capacità di foratura
Drilling capacity
acciaio R=500 N/mm²
ghisa: GG25

16
18



Maschiatura
Tapping

M14



Attacco utensile
Type of spindle

D DIN 55058 Ø25



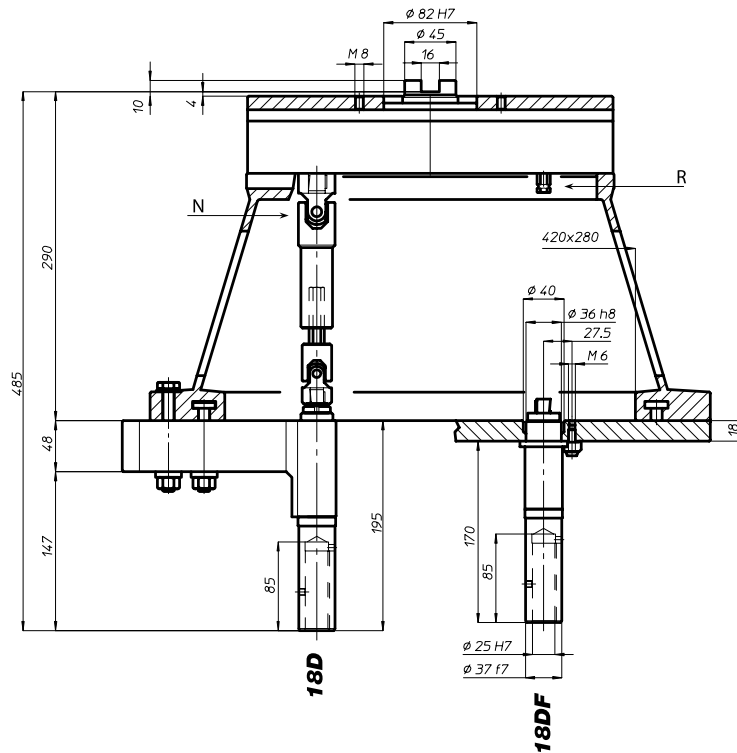
Peso gruppo testa
Head weight

Kg 36

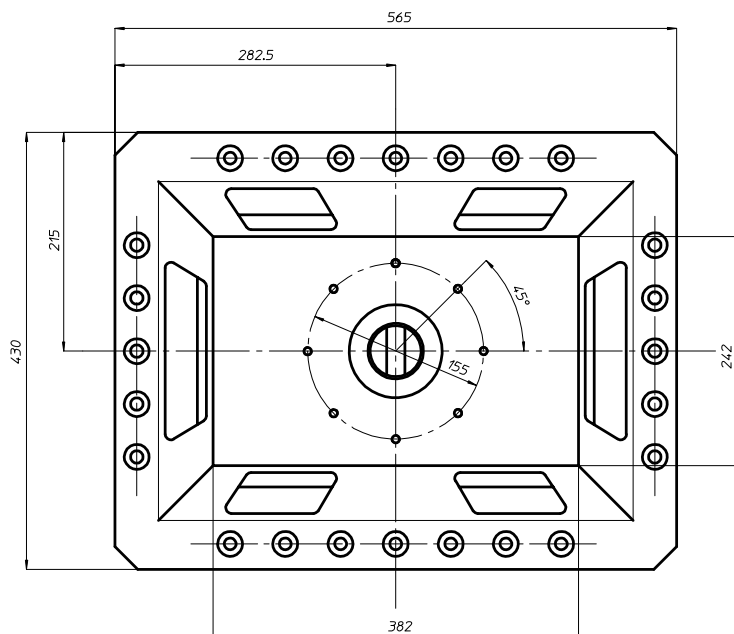
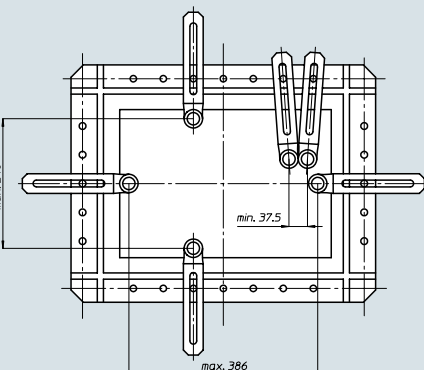


Peso gruppo mandrino
Spindle-set weight

Kg 3,3



area di lavoro
working area



BAH

TA-CP

TA

MO

HT

VH

TSI/TSX

T

MT-TC-TC3

Accessori
Accessories

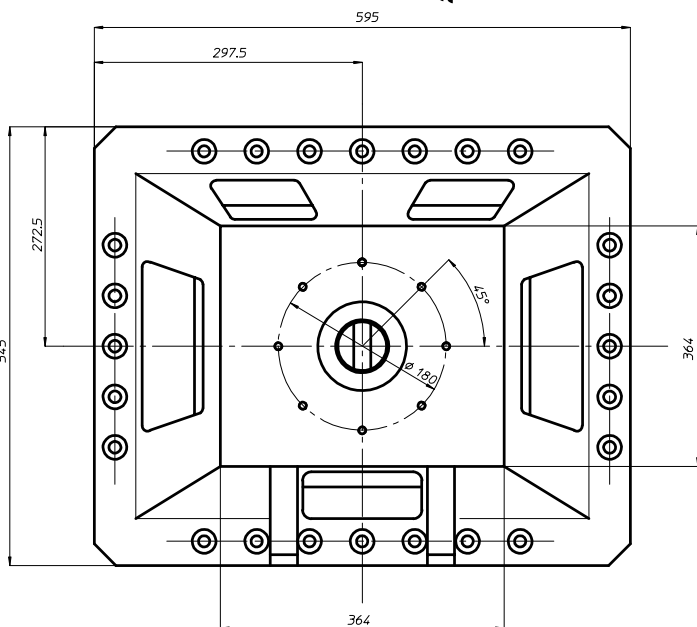
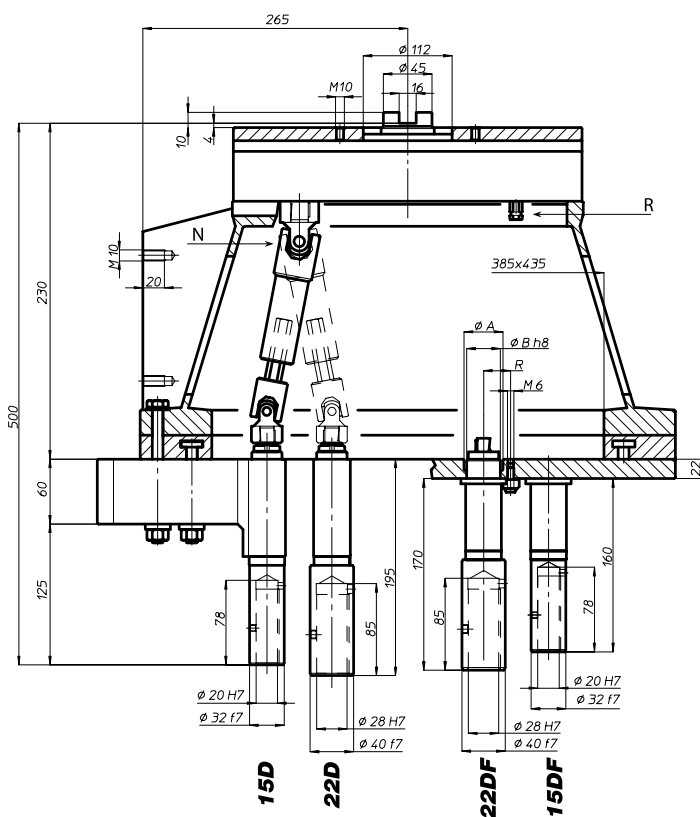
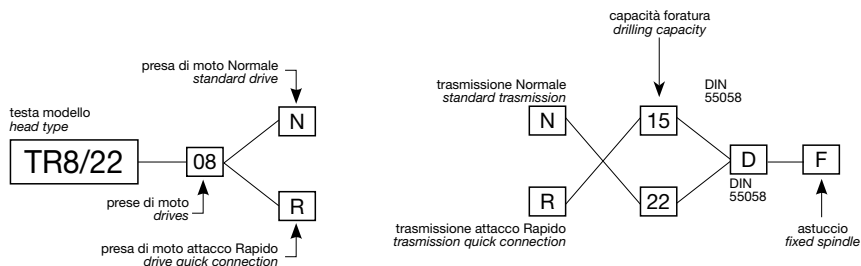
Appendice tecnica
Technical supplement



TR8/22

Codice testa
Head code

Codice mandrino
Spindle code



N° prese di moto
Nr. spindle drives

12



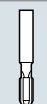
Rapporto
Ratio

1-1,5



Capacità di foratura
Drilling capacity
acciaio R=500 N/mm²
ghisa: GG25

15D: 13 22D: 20
15D: 15 22D: 22



Maschiatura
Tapping

15D: M12
22D: M16



Attacco utensile
Type of spindle

D DIN 55058 $\phi 20$ - $\phi 28$



Peso gruppo testa
Head weight

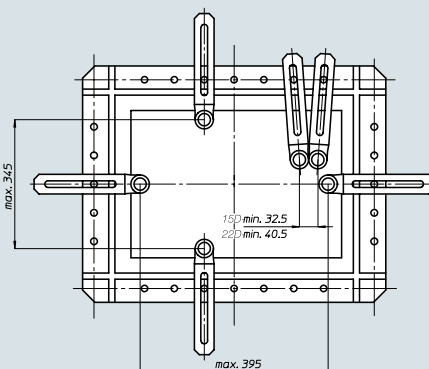
Kg 86



Peso gruppo mandrino
Spindle-set weight

15D: Kg 4
22D: Kg 5,5

area di lavoro
working area



BAH

TA-CP

TA

MO

HT

VH

TSI/TSX

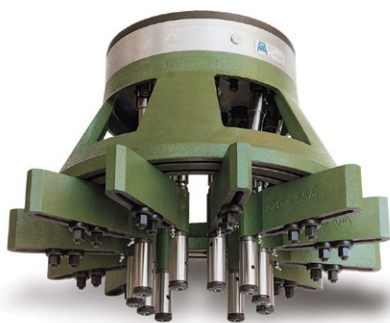
T

MT-TC-TC3

Accessori
Accessories

Appendice tecnica
Technical supplement

TM400



Codice testa
Head code

testa modello
head type

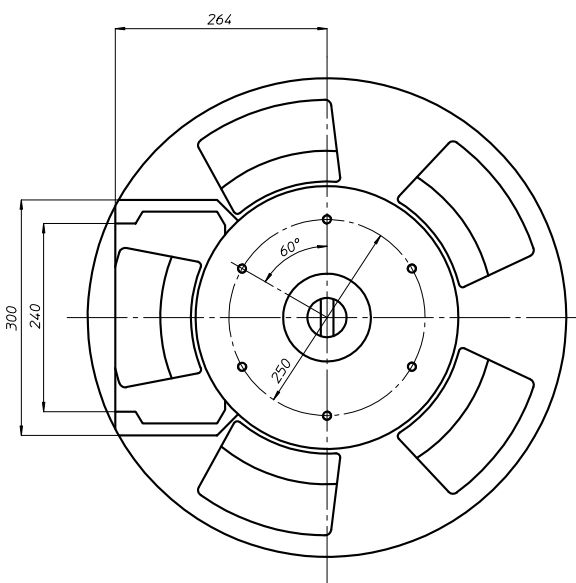
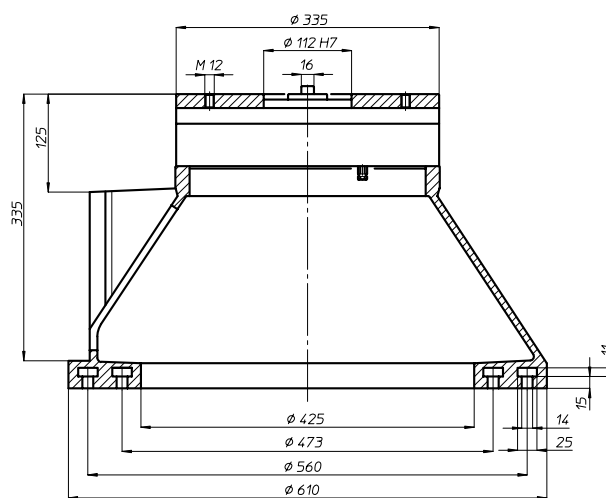
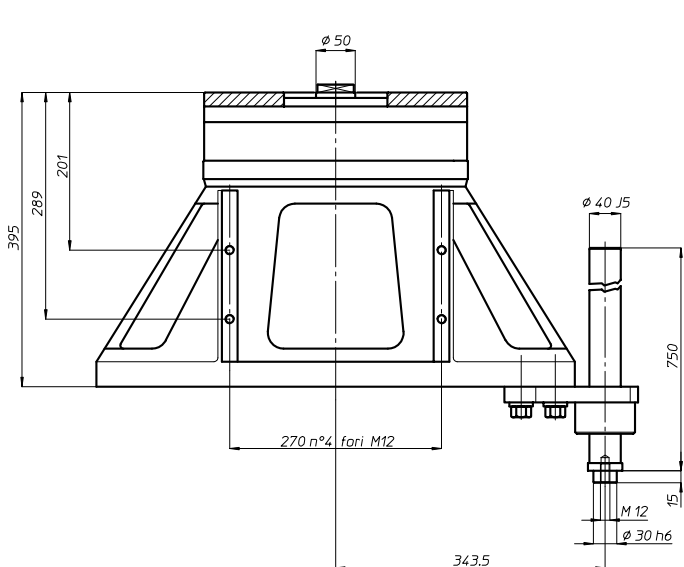
TM400

12

R

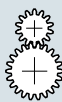
prese di moto
drives

presa di moto attacco Rapido
drive quick connection



N° prese di moto
Nr. spindle drives

12



Rapporto
Ratio

1-1



Peso
Weight

Kg 105

area di lavoro
working area

Ø 385



TM500



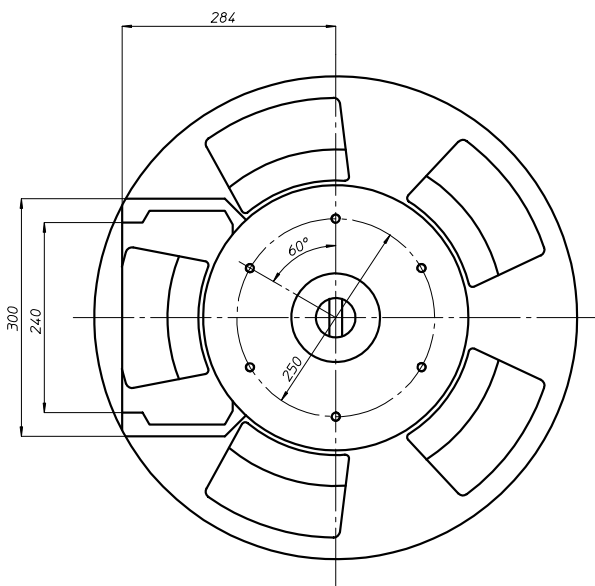
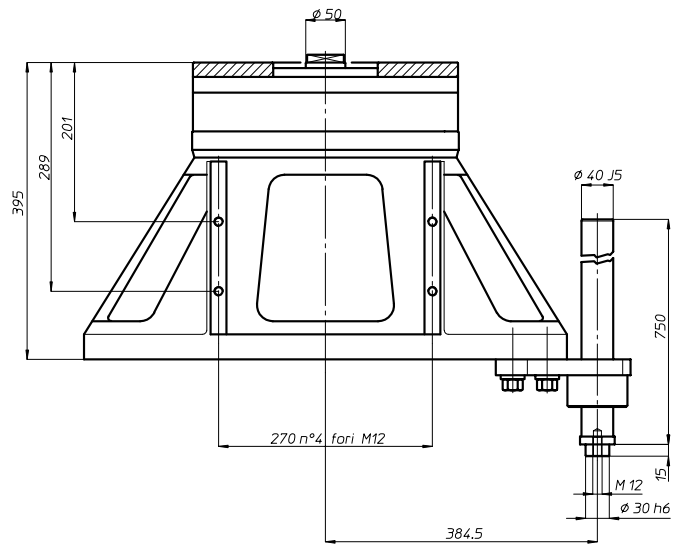
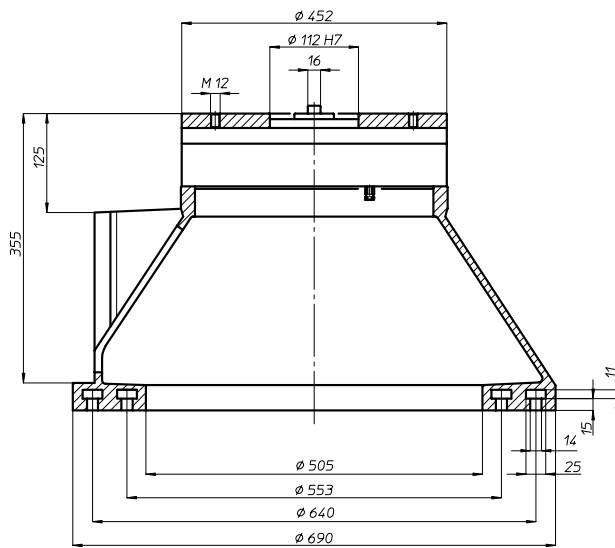
Codice testa
Head code

testa modello
head type



prese di moto
drives

presa di moto attacco Rapido
drive quick connection



	N° prese di moto Nr. spindle drives	18
	Rapporto Ratio	1-1
	Peso Weight	Kg 145
area di lavoro working area		
$\phi 465$		

BAH

TA-CP

TA

MO

HT

VH

TSI/TSX

T

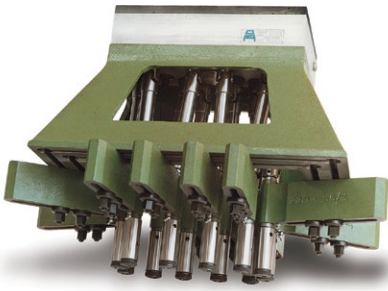
MT-TC-TC3

Accessori
Accessories

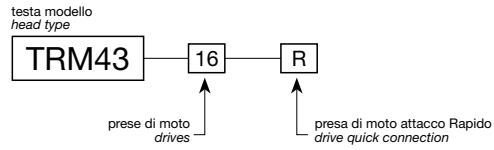
Appendice tecnica
Technical supplement



TRM43

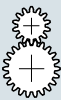


Codice testa
Head code



N° prese di moto
Nr. spindle drives

16



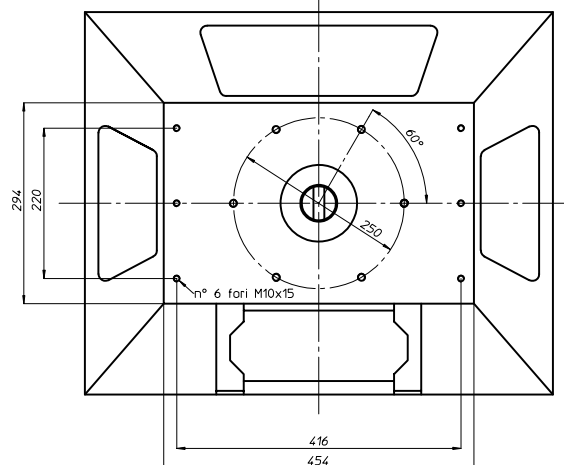
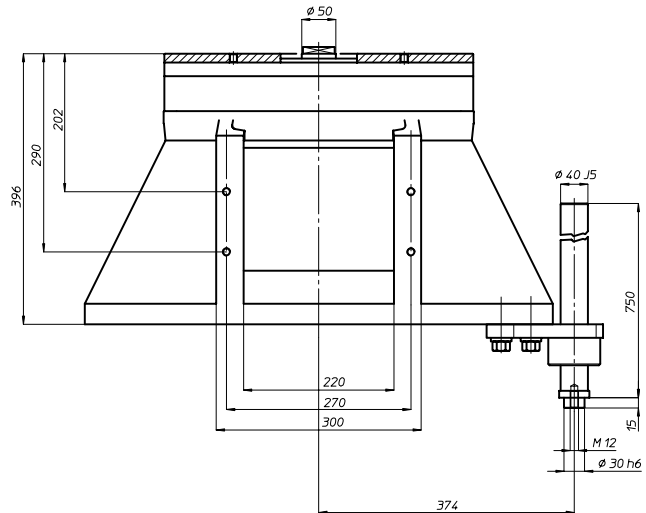
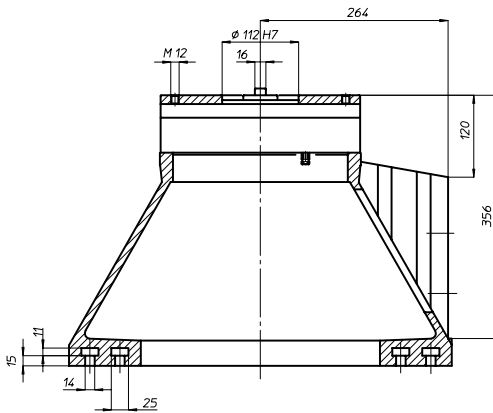
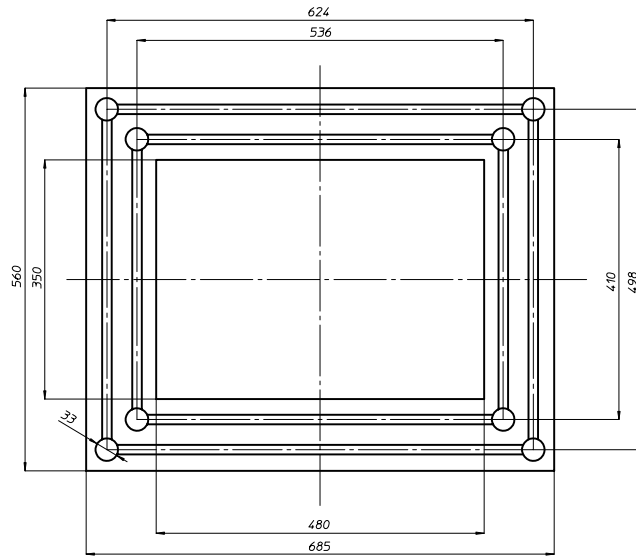
Rapporto
Ratio

1-1



Peso
Weight

Kg 135



area di lavoro
working area

300 x 440

BAH

TA-CP

TA

MO

HT

VH

TSI/TSX

T

MT-TC-TC3

Accessori
Accessories

Appendice tecnica
Technical supplement

8-26



TRM73

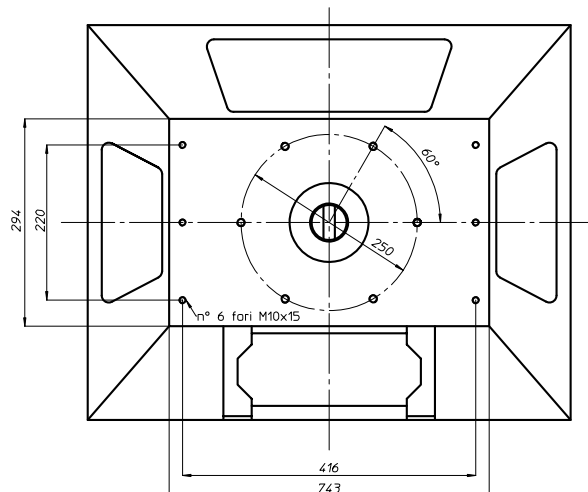
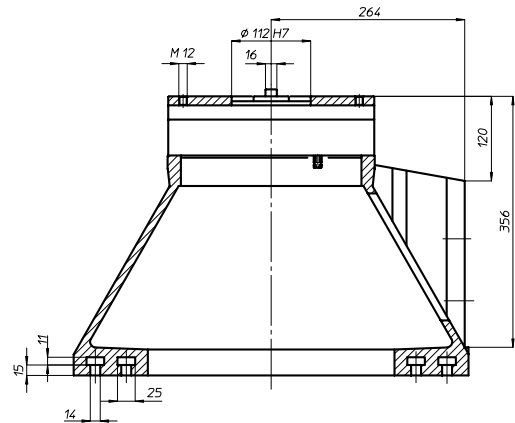
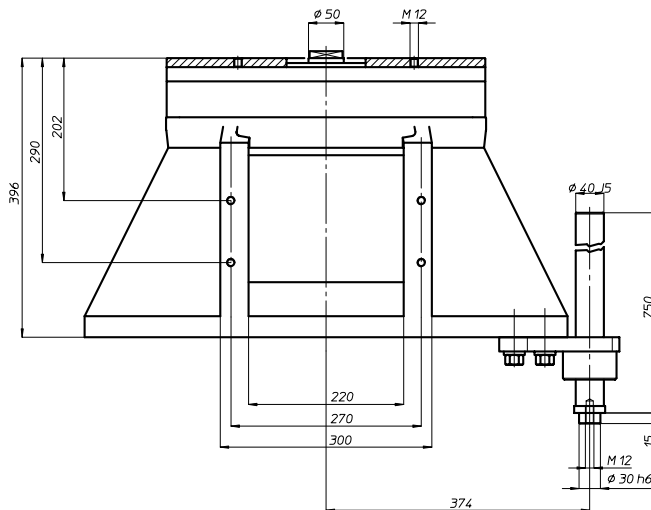
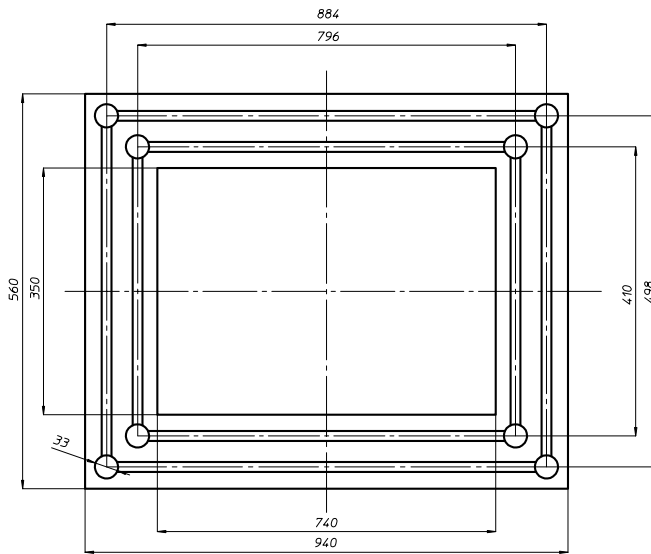
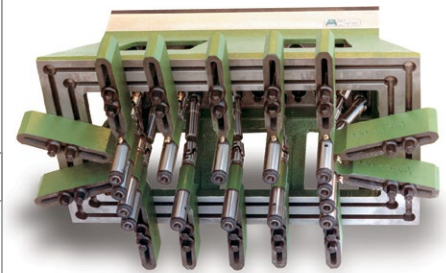
Codice testa
Head code

testa modello
head type

TRM73 26 R

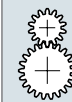
prese di moto
drives

presa di moto attacco Rapido
drive quick connection



N° prese di moto
Nr. spindle drives

26



Rapporto
Ratio

1-1



Peso
Weight

Kg 210

area di lavoro
working area

300 x 700



BAH

TA.CP

TA

MO

HT

VH

TSI/TSX

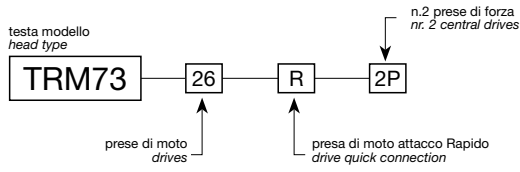
T

MT-TC-TC3

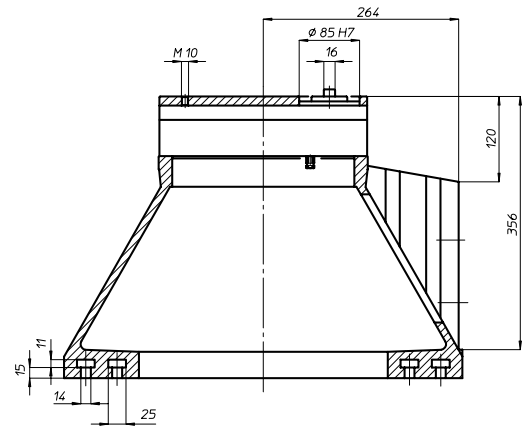
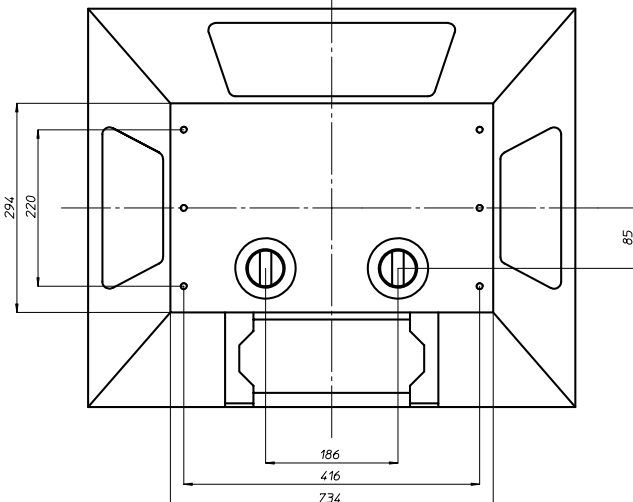
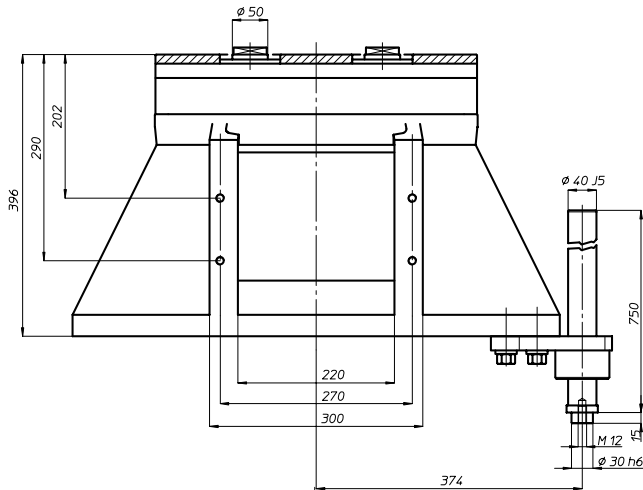
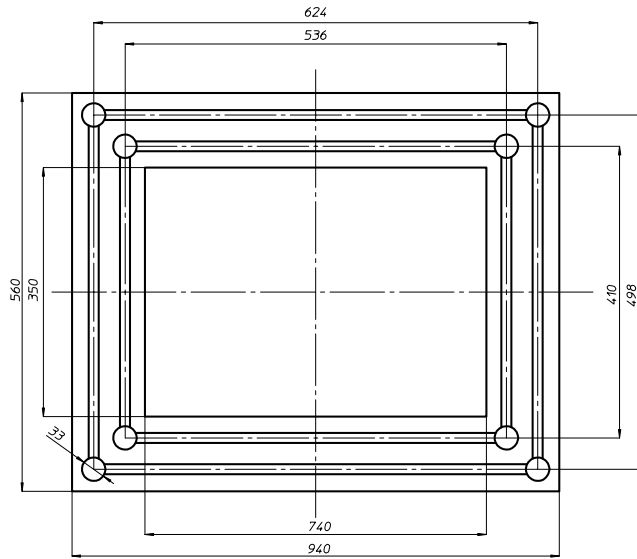
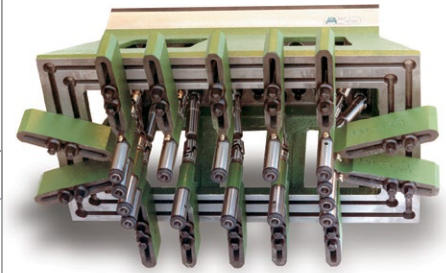
Accessori
Accessories

Appendice tecnica
Technical supplement

TRM73-2P

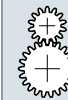


Codice testa
Head code



N° prese di moto
Nr. spindle drives

13+13



Rapporto
Ratio

1-1



Peso
Weight

Kg 210

area di lavoro
working area

300 x 700



BAH

TA.CP

TA

MO

HT

VH

TSI/TSX

T

MT-TC-TC3

Accessori
Accessories

Appendice tecnica
Technical supplement