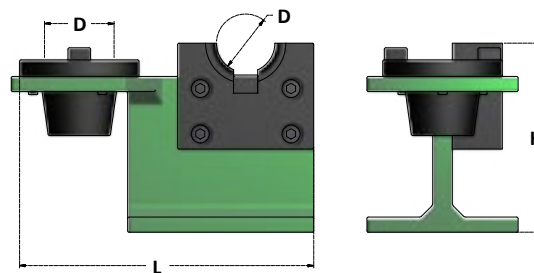
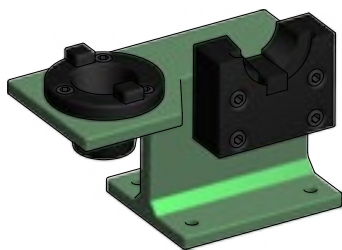


**SUPPORTI DI MONTAGGIO CON DOPPIA SEDE**  
*TOOL ASSEMBLY DEVICES WITH TWO SEATS*



Articolo	MANDRINI / TOOLHOLDERS	D	L	H
<b>TB3.SK30</b>	TC30	31,75	205	110
<b>TB3.SK40</b>	TC40	44,45	205	110
<b>TB3.SK50</b>	TC50	69,85	280	150

Articolo	MANDRINI / TOOLHOLDERS	D	L	H
<b>TB3.BT30</b>	BT30	31,75	205	110
<b>TB3.BT40</b>	BT40	44,45	205	110
<b>TB3.BT50</b>	BT50	69,85	280	150

I mandrini si possono montare in orizzontale e in verticale.  
*Toolholders can be mounted in vertical and horizontal position.*

Sono da fissare al banco di lavoro con 4 viti (non fornite).  
*Must be fixed to a bench with 4 bolts (not included).*