

## BUSSOLE DI RIDUZIONE CON BATTUTA

### HEADED REDUCTION BUSHES

Articolo	D1	D2	L	Fig
E2-1.20-6	20	6	55	1
E2-1.20-8	20	8	55	1
E2-1.20-10	20	10	55	1
E2-1.20-12	20	12	55	1
E2-1.20-14	20	14	55	3
E2-1.20-16	20	16	55	3

Articolo	D1	D2	L	Fig
E2-1.25-6	25	6	65	1
E2-1.25-8	25	8	65	1
E2-1.25-10	25	10	65	1
E2-1.25-12	25	12	65	1
E2-1.25-14	25	14	65	3
E2-1.25-16	25	16	65	3
E2-1.25-18	25	18	65	3
E2-1.25-20	25	20	65	3

Articolo	D1	D2	L	Fig
E2-1.32-6	32	6	70	2
E2-1.32-8	32	8	70	2
E2-1.32-10	32	10	70	2
E2-1.32-12	32	12	70	2
E2-1.32-14	32	14	70	2
E2-1.32-16	32	16	70	2
E2-1.32-18	32	18	70	2
E2-1.32-20	32	20	70	3
E2-1.32-25	32	25	70	3

Articolo	D1	D2	L	Fig
E2-1.40-6	40	6	80	2
E2-1.40-8	40	8	80	2
E2-1.40-10	40	10	80	2
E2-1.40-12	40	12	80	2
E2-1.40-14	40	14	80	2
E2-1.40-16	40	16	80	2
E2-1.40-18	40	18	80	2
E2-1.40-20	40	20	80	2
E2-1.40-25	40	25	80	2
E2-1.40-32	40	32	80	3

Articolo	D1	D2	L	Fig
E2-1.50-16	50	16	90	2
E2-1.50-20	50	20	90	2
E2-1.50-25	50	25	90	2
E2-1.50-32	50	32	90	2
E2-1.50-40	50	40	90	3

### SERIE DI BUSSOLE SU BASE DI LEGNO REDUCTION BUSHES SETS IN WOODEN TRAY

Articolo	D
TY.E2-1.20-5	6- 8- 10- 12- 16
TY.E2-1.25-6	6- 8- 10- 12- 16- 20
TY.E2-1.32-7	6- 8- 10- 12- 16- 20- 25
TY.E2-1.40-8	6- 8- 10- 12- 16- 20- 25- 32

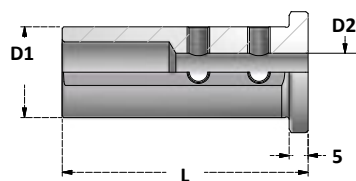


Fig. 1

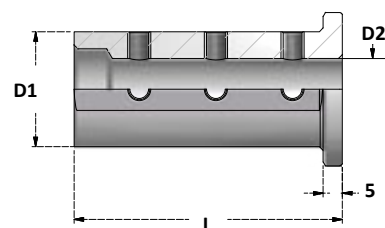


Fig. 2

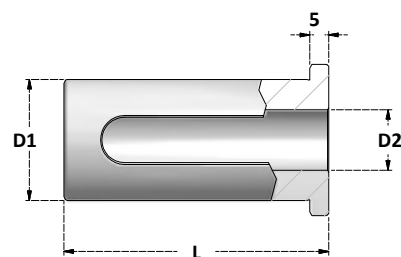


Fig. 3

