

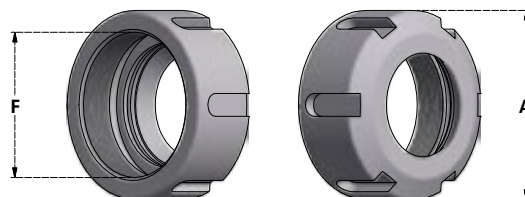
**GHIERE CHIUDIPINZA ER CON FILETTATURA STANDARD DESTRA**

*ER CLAMPING NUTS WITH STANDARD RIGHT THREAD*

**GHIERE ER STANDARD - ESTRAZIONE ECCENTRICA - TACCHE PER IL SERRAGGIO**

*STANDARD ER NUTS - ECCENTRIC EXTRACTOR - CLAMPING WITH SLOTS*

Articolo	A	F	Nm	CH1	CH2
<b>G16S</b>	32	M22x1,5	15÷50	CH16S	CD16S
<b>G20S</b>	35	M25x1,5	16÷75	CH20S	CD20S
<b>G25S</b>	42	M32x1,5	25÷100	CH25S	CD25S
<b>G32S</b>	50	M40x1,5	25÷140	CH32S	CD32S
<b>G40S</b>	63	M50x1,5	60÷170	CH40S	CD40S
<b>G50S</b>	78	M64x2	120÷250	CH50S	/



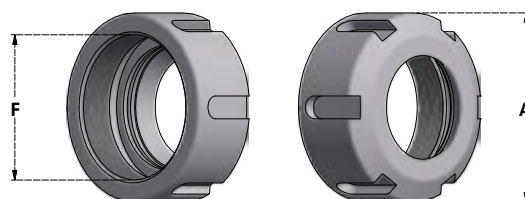
Chiusura con chiave per ghiera standard.  
*Closing with wrench for standard nuts.*

**GHIERE ER CONCENTRICHE - ESTRAZIONE CONCENTRICA - TACCHE PER IL SERRAGGIO**

*CONCENTRIC ER NUTS - CONCENTRIC EXTRACTOR - CLAMPING WITH SLOTS*

Articolo	A	F	Nm	CH1	CH2
<b>G16WD</b>	32	M22x1,5	15÷50	CH16S	CD16S
<b>G20WD</b>	35	M25x1,5	16÷75	CH20S	CD20S
<b>G25WD</b>	42	M32x1,5	25÷100	CH25S	CD25S
<b>G32WD</b>	50	M40x1,5	25÷140	CH32S	CD32S
<b>G40WD</b>	63	M50x1,5	60÷170	CH40S	CD40S

*Solo per pinze STANDARD e HP - Only for STANDARD and HP collets*

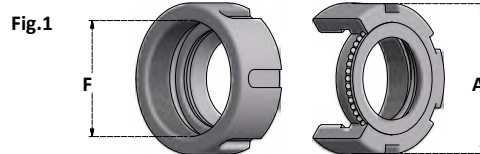


Maggiore equilibratura.  
Chiusura con chiave per ghiera standard.  
*Better balancing.*  
*Closing with wrench for standard nuts.*

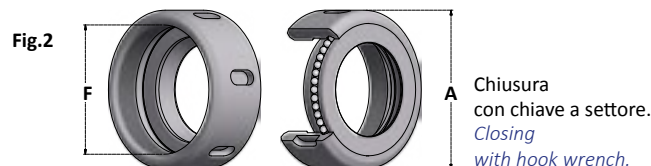
**GHIERE ER A SFERE - ESTRAZIONE ECCENTRICA - TACCHE PER IL SERRAGGIO**

*FRICITION BEARING ER NUTS - ECCENTRIC EXTRACTOR - CLAMPING WITH SLOTS*

Articolo	A	F	Nm	CH1	CH2	Fig
<b>G16C</b>	32	M22x1,5	16÷55	CH16S	CD16S	1
<b>G20C</b>	35	M25x1,5	16÷80	CH20S	CD20S	1
<b>G25C</b>	42	M32x1,5	20÷110	CH25S	CD25S	1
<b>G32C</b>	50	M40x1,5	20÷140	CH32S	CD32S	1
<b>G40C</b>	63	M50x1,5	40÷180	CH40S	CD40S	1
<b>G50C</b>	78	M64x2	50÷200	CH50S	/	1
<b>G60C</b>	83	M70x1,5	60÷240	CHO40	/	2



Serraggio con attrito ridotto per una maggiore precisione.  
Chiusura con chiave per ghiera standard.  
*Reduced grip increases precision.*  
*Closing with wrench for standard nuts.*

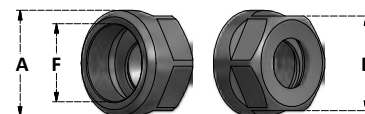


Chiusura con chiave a settore.  
*Closing with hook wrench.*

**GHIERE ER ESAGONALI - ESTRAZIONE ECCENTRICA - PIANI PER IL SERRAGGIO**

*HEXAGONAL ER NUTS - ECCENTRIC EXTRACTOR - FLATS FOR CLAMPING*

Articolo	A	E	F	Nm	CH1	CH2
<b>G11SE</b>	19	17	M14x0,75	8÷24	CH.E17	CD.E17
<b>G16SE</b>	28	25	M22x1,5	15÷50	CH.E25	CD.E25
<b>G20SE</b>	34	30	M25x1,5	16÷75	CH.E30	CD.E30
<b>G25SE</b>	42	38	M32x1,5	25÷100	CH.E38	/



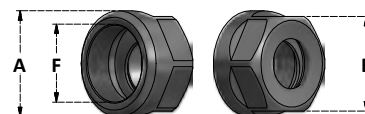
Chiusura con chiave a forchetta.  
*Closing with open-end wrench.*

**GHIERE ER ESAGONALI CONCENTRICHE - ESTRAZIONE CONCENTRICA - PIANI PER IL SERRAGGIO**

*HEXAGONAL ER CONCENTRIC NUTS - CONCENTRIC EXTRACTOR - FLATS FOR CLAMPING*

Articolo	A	E	F	Nm	CH1	CH2
<b>G16WDE</b>	28	25	M22x1,5	15÷50	CH.E25	CD.E25
<b>G20WDE</b>	34	30	M25x1,5	16÷75	CH.E30	CD.E30

*Solo per pinze STANDARD e HP - Only for STANDARD and HP collets*



Maggiore equilibratura.  
Chiusura con chiave a forchetta.  
*Better balancing.*  
*Closing with open-end wrench.*

**Nm:** Forza di serraggio consigliata - Recommended tightening torque

**CH1:** Chiave standard consigliata - Recommended standard wrench

**CH2:** Chiave dinamometrica consigliata - Recommended torque wrench

