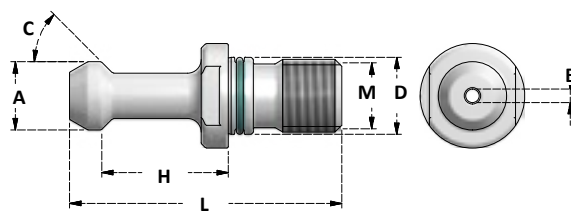


TIRANTI HURCO

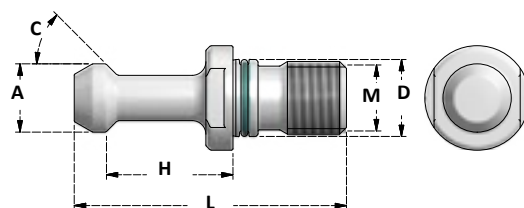
PULL STUDS HURCO



TIRANTI HURCO FORATI

PULL STUDS HURCO WITH COOLANT BORE

Articolo	M	C	A	H±0,05	D	L	B	CONO
PS.BT40.HC1F	M16	45°	15	25,15	17	57,15	3	40
PS.BT40.HC2F	M16	60°	15	25,15	17	57,15	3	40
PS.BT40.HC3F	M16	90°	15	25,15	17	57,15	3	40



TIRANTI HURCO SENZA FORO

PULL STUDS HURCO WITHOUT COOLANT BORE

Articolo	M	C	A	H±0,05	D	L	B	CONO
PS.BT40.HC1SF	M16	45°	15	25,15	17	57,15	/	40
PS.BT40.HC2SF	M16	60°	15	25,15	17	57,15	/	40
PS.BT40.HC3SF	M16	90°	15	25,15	17	57,15	/	40

SEDE CHIP A RICHIESTA
CHIP HOLE ON REQUEST