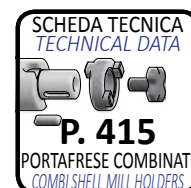
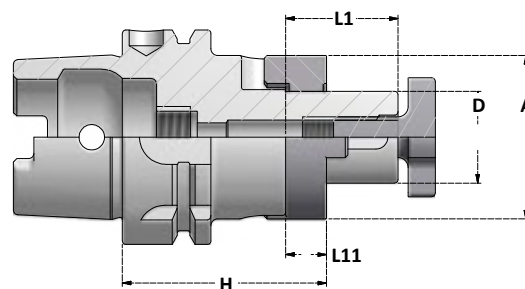


**MANDRINI PORTAFRESA COMBINATI**  
COMBI SHELL MILL HOLDERS



DIMENSIONI  
DELL'ATTACCO  
SHANK  
DIMENSIONS

**G6,3**  
15000 r.p.m.

Articolo	D	H	A	L1	L11	ATR	VTC	CHV
HSK50A.H50.D16C	16	50	32	27	10	ATR.D16	VTC.D16	CHV.D16
HSK50A.H50.D22C	22	50	40	31	12	ATR.D22	VTC.D22	CHV.D22
HSK50A.H65.D27C	27	65	48	33	12	ATR.D27	VTC.D27	CHV.D27
HSK50A.H65.D32C	32	65	58	38	14	ATR.D32	VTC.D32	CHV.D32

**G6,3**  
15000 r.p.m.

Articolo	D	H	A	L1	L11	ATR	VTC	CHV
HSK63A.H60.D16C	16	60	32	27	10	ATR.D16	VTC.D16	CHV.D16
HSK63A.H100.D16C	16	100	32	27	10	ATR.D16	VTC.D16	CHV.D16
HSK63A.H160.D16C	16	160	32	27	10	ATR.D16	VTC.D16	CHV.D16
HSK63A.H60.D22C	22	60	40	31	12	ATR.D22	VTC.D22	CHV.D22
HSK63A.H100.D22C	22	100	40	31	12	ATR.D22	VTC.D22	CHV.D22
HSK63A.H160.D22C	22	160	40	31	12	ATR.D22	VTC.D22	CHV.D22
HSK63A.H60.D27C	27	60	48	33	12	ATR.D27	VTC.D27	CHV.D27
HSK63A.H100.D27C	27	100	48	33	12	ATR.D27	VTC.D27	CHV.D27
HSK63A.H160.D27C	27	160	48	33	12	ATR.D27	VTC.D27	CHV.D27
HSK63A.H60.D32C	32	60	58	38	14	ATR.D32	VTC.D32	CHV.D32
HSK63A.H100.D32C	32	100	58	38	14	ATR.D32	VTC.D32	CHV.D32
HSK63A.H160.D32C	32	160	58	38	14	ATR.D32	VTC.D32	CHV.D32
HSK63A.H70.D40C	40	70	70	41	14	ATR.D40	VTC.D40	CHV.D40
HSK63A.H100.D40C	40	100	70	41	14	ATR.D40	VTC.D40	CHV.D40
HSK63A.H160.D40C	40	160	70	41	14	ATR.D40	VTC.D40	CHV.D40

**G6,3**  
15000 r.p.m.

Articolo	D	H	A	L1	L11	ATR	VTC	CHV
HSK100A.H60.D16C	16	60	32	27	10	ATR.D16	VTC.D16	CHV.D16
HSK100A.H100.D16C	16	100	32	27	10	ATR.D16	VTC.D16	CHV.D16
HSK100A.H160.D16C	16	160	32	27	10	ATR.D16	VTC.D16	CHV.D16
HSK100A.H60.D22C	22	60	40	31	12	ATR.D22	VTC.D22	CHV.D22
HSK100A.H100.D22C	22	100	40	31	12	ATR.D22	VTC.D22	CHV.D22
HSK100A.H160.D22C	22	160	40	31	12	ATR.D22	VTC.D22	CHV.D22
HSK100A.H60.D27C	27	60	48	33	12	ATR.D27	VTC.D27	CHV.D27
HSK100A.H100.D27C	27	100	48	33	12	ATR.D27	VTC.D27	CHV.D27
HSK100A.H160.D27C	27	160	48	33	12	ATR.D27	VTC.D27	CHV.D27
HSK100A.H60.D32C	32	60	58	38	14	ATR.D32	VTC.D32	CHV.D32
HSK100A.H100.D32C	32	100	58	38	14	ATR.D32	VTC.D32	CHV.D32
HSK100A.H160.D32C	32	160	58	38	14	ATR.D32	VTC.D32	CHV.D32
HSK100A.H70.D40C	40	70	70	41	14	ATR.D40	VTC.D40	CHV.D40
HSK100A.H100.D40C	40	100	70	41	14	ATR.D40	VTC.D40	CHV.D40
HSK100A.H160.D40C	40	160	70	41	14	ATR.D40	VTC.D40	CHV.D40

ACCESSORI - ACCESSORIES

